

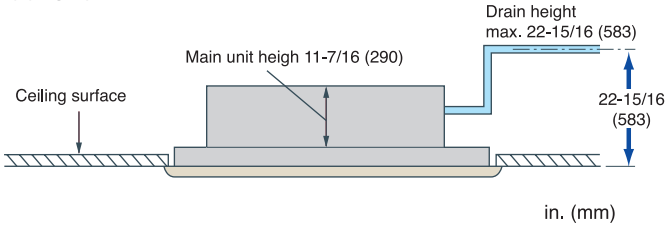
PLFY-P NLMU-E

SLIM BODY OF 11-7/16 in. (290 mm) HEIGHT



EQUIPPED WITH DRAIN PUMP MECHANISM AS STANDARD

The drain can be positioned anywhere up to 22-15/16 in. (583 mm) from the ceiling's surface, providing greater freedom with long cross-piping and allowing more versatility with piping layouts.



COMPACT UNIT AND LOW SOUND PRESSURE LEVEL ATTAINED!

Sound pressure level table (Standard static pressure) at 0 in. WG (0 Pa)

<208V>		Capacity	P06	P08	P12	P15	P18
Sound pressure level	Fan Speed	High	33			36	37
		Mid	30			33	34
		Low	27			29	31

<230V>		Capacity	P06	P08	P12	P15	P18
Sound pressure level	Fan Speed	High	34			37	38
		Mid	31			34	35
		Low	28			30	32

SLIM BODY - ONLY 11-7/16 in. (290 mm) HEIGHT

The slimline body is highly suitable for installation in narrow ceiling spaces and for replacing obsolete air-conditioning equipment in older buildings. The main unit is only 11-7/16 in. (290 mm) height.

TERMINAL BLOCK ON OUTSIDE OF MAIN UNIT MAKES WIRING EASIER

FRESH AIR DIRECTLY TAKEN IN

Fresh air can be taken in to the main unit directly (optional accessories needed.)

LONG-LIFE FILTER EQUIPPED AS STANDARD

The antibacterial long-life filter does not require maintenance for approximately a year.

EASY INSTALLATION

Lighter panel and placing the electric board near the panel make installation and maintenance easier. Also, the heat exchanger is washable by displacing the center panel, filter, and fan.

SPECIFICATIONS

Model			PLFY-P06NLMU-E	PLFY-P08NLMU-E	PLFY-P12NLMU-E	PLFY-P15NLMU-E	PLFY-P18NLMU-E	
Power source			1-phase 208/230 V 60Hz					
Cooling capacity (Nominal)	*1	BTU / h	6,000	8,000	12,000	15,000	18,000	
	*1	kW	1.8	2.3	3.5	4.4	5.3	
		Power input	kW	0.068/0.075	0.068/0.075	0.068/0.075	0.077/0.085	0.078/0.086
		Current input	A	0.34/0.37	0.34/0.37	0.34/0.37	0.38/0.42	0.39/0.43
Heating capacity (Nominal)	*1	BTU / h	6,700	9,000	13,500	17,000	20,000	
	*1	kW	2.0	2.6	4.0	5.0	5.9	
		Power input	kW	0.068/0.075	0.068/0.075	0.068/0.075	0.077/0.085	0.078/0.086
		Current input	A	0.34/0.37	0.34/0.37	0.34/0.37	0.38/0.42	0.39/0.43
External finish			Unit : Galvanized					
External dimension		in.	11-7/16 x 30-9/16 x 24-31/32	11-7/16 x 30-9/16 x 24-31/32	11-7/16 x 30-9/16 x 24-31/32	11-7/16 x 30-9/16 x 24-31/32	11-7/16 x 37-1/4 x 24-31/32	
H x W x D		mm	290 x 776 x 634	290 x 776 x 634	290 x 776 x 634	290 x 776 x 634	290 x 946 x 634	
Net weight		lbs (kg)	51 (23)	51 (23)	53 (24)	53 (24)	60 (27)	
Decoration panel	Model		CMP-40VLW-B	CMP-40VLW-B	CMP-40VLW-B	CMP-40VLW-B	CMP-63VLW-B	
	External finish		ABS,MUNSELL(0.7Y 8.59/0.97),include Service Panel : Galvanized,MUNSELL(0.7Y 8.59/0.97)					
	Dimension	in.	13/16 x 42-17/32 x 27-31/32	13/16 x 42-17/32 x 27-31/32	13/16 x 42-17/32 x 27-31/32	13/16 x 42-17/32 x 27-31/32	13/16 x 49-7/32 x 27-31/32	
	H x W x D	mm	20 x 1,080 x 710	20 x 1,080 x 710	20 x 1,080 x 710	20 x 1,080 x 710	20 x 1,250 x 710	
	Net Weight	lbs (kg)	15(6.5)	15(6.5)	15(6.5)	15(6.5)	17(7.5)	
Heat exchanger			Cross fin(Aluminium fin and copper tube)					
FAN	Type x Quantity		Turbo fan x 1	Turbo fan x 1	Turbo fan x 1	Turbo fan x 1	Turbo fan x 1	
	External static pressure	in. WG	—	—	—	—	—	
		Pa	—	—	—	—	—	
		in. WG	—	—	—	—	—	
		Pa	—	—	—	—	—	
	Motor type		1-phase induction motor					
	Motor output		kW	0.015	0.015	0.015	0.020	
	Driving mechanism		Direct-driven					
	Airflow rate #2 (Low-Mid-High)	cfm	230-282-335	230-282-335	230-282-335	247-300-371	318-388-441	
		m ³ / min	6.5-8.0-9.5	6.5-8.0-9.5	6.5-8.0-9.5	7.0-8.5-10.5	9.0-11.0-12.5	
L / s		108-133-158	108-133-158	108-133-158	117-142-175	150-183-208		
Sound pressure level (Low-Mid-High)	*2 *3	dB <A>	27-30-33 (208V)	27-30-33 (208V)	27-30-33 (208V)	29-33-36 (208V)	31-34-37 (208V)	
		dB <A>	28-31-34 (230V)	28-31-34 (230V)	28-31-34 (230V)	30-34-37 (230V)	32-35-38 (230V)	
		dB <A>	—	—	—	—	—	
	Air filter		Standard filter					
Diameter of refrigerant pipe (O.D.)	Liquid (R410A) (R22)	in. (mm)	ø1/4 (ø6.35) Flare	ø1/4 (ø6.35) Flare	ø1/4 (ø6.35) Flare	ø1/4 (ø6.35) Flare	ø1/4 (ø6.35) Flare	
			—	—	ø1/4 (ø6.35) Flare	ø1/4 (ø6.35) Flare	ø3/8 (ø9.52) Flare	
	Gas (R410A) (R22)	in. (mm)	ø1/2 (ø12.7) Flare	ø1/2 (ø12.7) Flare	ø1/2 (ø12.7) Flare	ø1/2 (ø12.7) Flare	ø1/2 (ø12.7) Flare	
			—	—	ø1/2 (ø12.7) Flare	ø1/2 (ø12.7) Flare	ø5/8 (ø15.88) Flare	
Field drain pipe diameter		in. (mm)	O.D. 1-1/4 (32)	O.D. 1-1/4 (32)	O.D. 1-1/4 (32)	O.D. 1-1/4 (32)	O.D. 1-1/4 (32)	

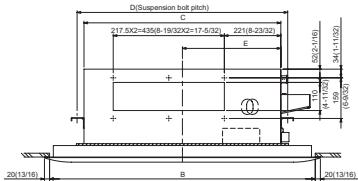
OPTIONAL PARTS

Description	Model	Applicable capacity
		PLFY-P NLMU-E
Decoration panel	CMP-40VLW-B	P06, P08, P12, P15
	CMP-63VLW-B	P18
OA duct flange	PAC-KH10F	P06, P08, P12, P15, P18
External heater adaptor	PAC-YU24HT-F	P06, P08, P12, P15, P18

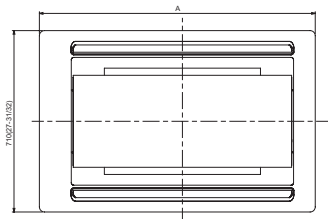
*1 Cooling / Heating capacity indicates the maximum value at operation under the following condition.
Cooling: Indoor 80°F (26.7°C) D.B. / 67°F (19.4°C) W.B., Outdoor 95°F (35°C) D.B.
Pipe length 25ft. (7.6m), Level difference 0ft. (0m)
Heating: Indoor 70°F (21.1°C) D.B., Outdoor 47°F (8.3°C) D.B. / 43°F (6.1°C) W.B.
Pipe length 25ft. (7.6m), Level difference 0ft. (0m)
*2 Airflow rate / Sound pressure level are in (low-middle-high).
*3 It is measured in anechoic room.

PLFY-P06/08/12/15/18NLMU-E

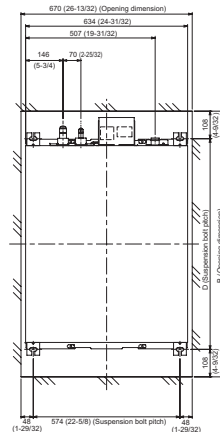
Front view



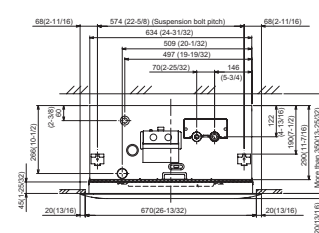
Lower view



Upper view



Side view



Model	A	B	C	D	E
PLFY-P06NLMU-E	1080	1040	776	824	388
PLFY-P08NLMU-E	1250	1210	946	994	473
PLFY-P12NLMU-E	1420	1380	1118	1168	558
PLFY-P15NLMU-E	1590	1550	1290	1340	643
PLFY-P18NLMU-E	1760	1720	1462	1512	728