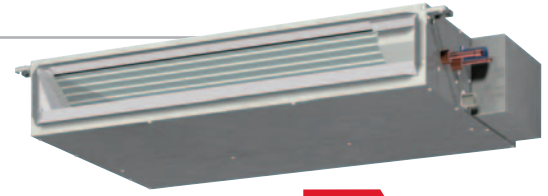


PEFY-P NMSU-E

THE ULTRA-THIN UNIT OFFERS INCREASED FLEXIBILITY, AND IS PARTICULARLY SUITABLE FOR PLACES WHERE LOW-NOISE OPERATION IS DESIRED FROM A SLIM LINE BODY.



NEW

Static Pressure
0.02~0.20 in.WG
5~50Pa

Height
7-7/8 in.
200 mm

Low Noise

Width
31-1/8 in.
790 mm

Width
39 in.
990 mm

Width
46-7/8 in.
1,190 mm



CHANGEABLE STATIC PRESSURE

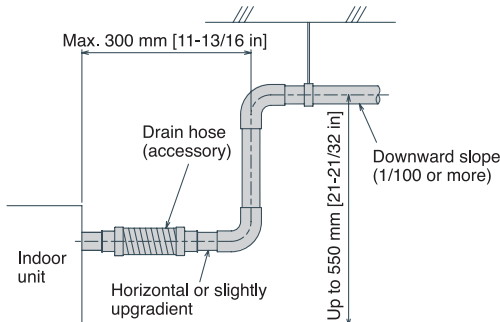
The unit is made suitable for a variety of applications with its four static pressure settings of 5, 15, 35, 50Pa (0.02, 0.06, 0.14, 0.20 in.WG).

CHANGEABLE AIRFLOW RATE

Low, middle, and high fan speed settings deliver precise comfort.

DRAIN PUMP

Drain pump is attached as standard.

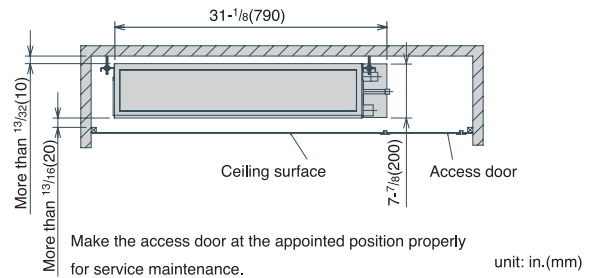


PP HONEYCOMB FABRIC

Washable PP Honeycomb fabric filter as standard

ULTRA LOW HEIGHT UNIT WITH 7-7/8 in. (200 mm) HIGH

Can be installed easily in tight spaces, such as ceiling cavities or drop-ceilings.



PEFY-P06,08,12 NMSU-E Model

REDUCED NOISE THANKS TO THE USE OF NEWLY DESIGNED CENTRIFUGAL FAN AND COIL

Sound pressure level table (Standard static pressure) at 15Pa (0.06in. WG) dB(A)

Sound pressure Level	Capacity		P06	P08	P12	P15	P18	P24
	Fan Speed	High	28	30	35	33	37	40
		Mid	24	26	28	30	34	35
	Low	22	23	23	28	30	30	30

SPECIFICATIONS

Model		PEFY-P06NMSU-E	PEFY-P08NMSU-E	PEFY-P12NMSU-E	PEFY-P15NMSU-E	PEFY-P18NMSU-E	PEFY-P24NMSU-E
Power source		1-phase 208 / 230V 60Hz					
Cooling capacity (Nominal)	*1 BTU / h	6,000	6,000	12,000	15,000	18,000	24,000
	*1 kW	1.8	2.3	3.5	4.4	5.3	7.0
	Power input kW	0.05 / 0.05	0.06 / 0.06	0.07 / 0.07	0.07 / 0.07	0.09 / 0.09	0.12 / 0.12
Heating capacity (Nominal)	*1 BTU / h	6,700	9,000	13,500	17,000	20,000	27,000
	*1 kW	2.0	2.6	4.0	5.0	5.9	7.9
	Power input kW	0.03 / 0.03	0.04 / 0.04	0.05 / 0.05	0.05 / 0.05	0.07 / 0.07	0.10 / 0.10
External finish	*1	0.42 / 0.41	0.51 / 0.49	0.56 / 0.53	0.57 / 0.55	0.74 / 0.70	0.98 / 0.93
	Current input A	0.32 / 0.31	0.41 / 0.39	0.46 / 0.43	0.47 / 0.45	0.64 / 0.60	0.88 / 0.83
	Current input A	0.32 / 0.31	0.41 / 0.39	0.46 / 0.43	0.47 / 0.45	0.64 / 0.60	0.88 / 0.83
External dimension	in.	7-7/8 x 31-1/8 x 27-9/16	7-7/8 x 31-1/8 x 27-9/16	7-7/8 x 31-1/8 x 27-9/16	7-7/8 x 39 x 27-9/16	7-7/8 x 39 x 27-9/16	7-7/8 x 46-7/8 x 27-9/16
H x W x D	mm	200 x 790 x 700	200 x 790 x 700	200 x 790 x 700	200 x 990 x 700	200 x 990 x 700	200 x 1,190 x 700
Net weight	lbs (kg)	42 (19)	42 (19)	46 (20)	54 (24)	54 (24)	62 (28)
Heat exchanger		Cross fin (Aluminium fin and copper tube)					
FAN	Type x Quantity	Sirocco fan x 2	Sirocco fan x 2	Sirocco fan x 2	Sirocco fan x 3	Sirocco fan x 3	Sirocco fan x 4
	External *3 in. WG	0.02-0.06-0.14-0.20					
	static pressure Pa	5-15-35-50					
	Motor type	DC brushless motor					
	Motor output kW	0.096					
	Driving mechanism	Direct-driven					
	Airflow rate *2	cfm	176-212-247	194-247-317	211-282-370	282-335-388	353-441-529
	(Low-Mid-High)	m ³ / min	5-6-7	5-5-7-9	6-8-10.5	8-9.5-11	10-12.5-15
Sound pressure level (Low-Mid-High)	*2 *3	L / s	83-100-117	91-116-150	91-116-150	133-158-183	167-208-250
	dB <A>		22-24-28	23-26-30	23-28-35	28-30-33	30-34-37
							30-35-40
Air filter	in. (mm)	PP Honeycomb fabric (washable)					
Diameter of refrigerant pipe (O.D.)	Liquid (R410A) (R22)	in. (mm)	ø1/4 (ø6.35) Braze	ø1/4 (ø6.35) Braze	ø1/4 (ø6.35) Braze	ø1/4 (ø6.35) Braze	ø3/8 (ø9.52) Braze
	Gas (R410A) (R22)	in. (mm)	ø1/4 (ø6.35) Braze	ø1/4 (ø6.35) Braze	ø1/4 (ø6.35) Braze	ø1/4 (ø6.35) Braze	ø3/8 (ø9.52) Braze
		in. (mm)	ø1/2 (ø12.7) Braze	ø1/2 (ø12.7) Braze	ø1/2 (ø12.7) Braze	ø1/2 (ø12.7) Braze	ø5/8 (ø15.88) Braze
		in. (mm)	ø1/2 (ø12.7) Braze	ø1/2 (ø12.7) Braze	ø1/2 (ø12.7) Braze	ø5/8 (ø15.88) Braze	ø5/8 (ø15.88) Braze
Field drain pipe diameter	in. (mm)	O.D. 1-1/4 (32)					

OPTIONAL PARTS

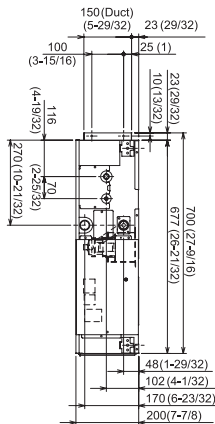
Description	Model	Applicable capacity
External heater adaptor	PAC-YU25HT-G	P06, P08, P12, P15, P18, P24

*1 Cooling/Heating capacity indicates the maximum value at operation under the following condition.
Cooling : Indoor 80°F (26.7°C) D.B. / 67°F (19.4°C) W.B., Outdoor 95°F (35°C) D.B.
Pipe length 25ft. (7.6m), Level difference 0ft. (0m)
Heating: Indoor 70°F (21.1°C) D.B., Outdoor 47°F (8.3°C) D.B. / 43°F (6.1°C) W.B.
Pipe length 25ft. (7.6m), Level difference 0ft. (0m)

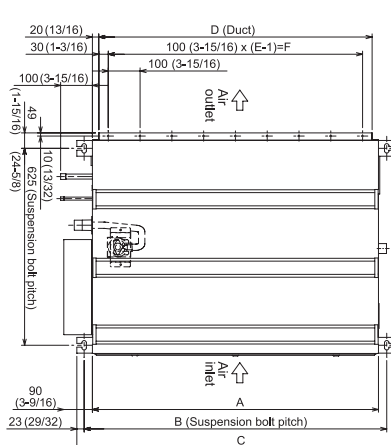
*2 Airflow rate / Sound pressure level are in (low-middle-high).
*3 It is measured in anechoic room.

PEFY-P06/08/12/15/18/24NMSU-E

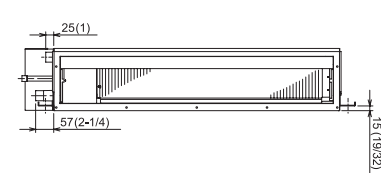
Side view



Upper view



Front view



Model	A	B	C	D	E	F
PEFY-P06,08,12NMSU-E	700 (27-9/16)	752 (29-5/8)	798 (31-7/16)	660 (26)	7	600 (23-5/8)
PEFY-P15NMSU-E	900 (35-7/16)	952 (37-1/2)	998 (39-5/16)	860 (33-7/8)	9	800 (31-1/2)
PEFY-P18NMSU-E	1100 (43-5/16)	1152 (45-3/8)	1198 (47-3/16)	1060 (41-3/4)	11	1000 (39-3/8)