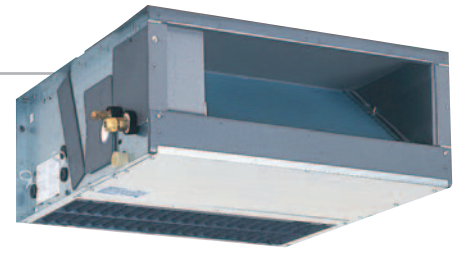


PDFY-P NMU-E

ACHIEVING CREATIVE AIR CONDITIONING DESIGN THROUGH A RICH ARRAY OF SYSTEM MATERIALS



208V

Static Pressure  
(in.WG) 0.120(0.200)~0.321 / 0.401(0.522)  
(Pa) 30(50)~80 / 100(130)

230V

Static Pressure  
(in.WG) 0.161(0.241)~0.401 / 0.462(0.602)  
(Pa) 40(60)~100 / 115(150)



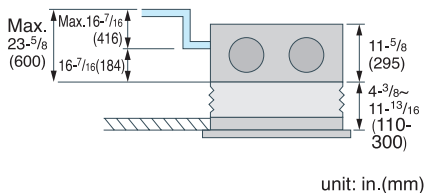
AIR OUTLET SIDE COMPATIBLE WITH A VARIETY OF DUCTS (OPTIONAL)

Adjustable setting of external static pressure to meet system configuration and installation conditions

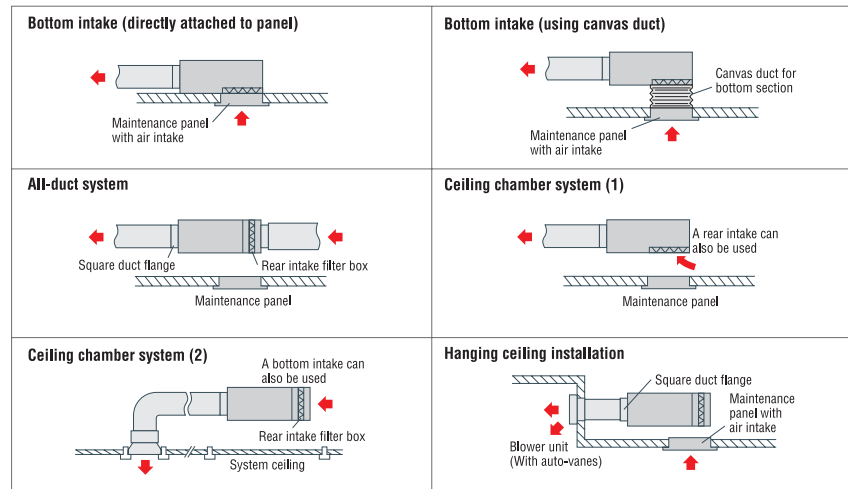
Static pressure settings can be increased to adjust to all kinds of ducts as well as functional upgrade option (high performance filter etc). An increase from the standard 0.241in.WG (60 Pa) to 0.602 in.WG (150 Pa) is possible to cope with various layout configurations.

\*For P36~P48 (230V)

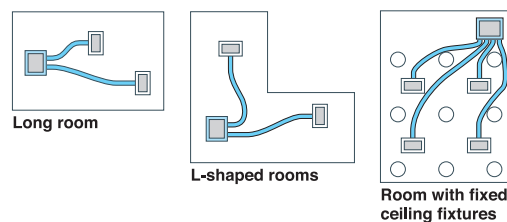
SLIM 11-5/8 in. (295 mm) MAIN UNIT WITH OPTIONAL DRAIN PUMP ENSURES UP TO 23-5/8 in. (600 mm) OF LIFT



MULTIPLE INSTALLATION PATTERNS FOR ASSORTED APPLICATIONS AND LOCATIONS



FLEXIBLE INSTALLATION FOR A VARIETY OF LAYOUTS



**SPECIFICATIONS**

Model		PDFY-P06NMU-E	PDFY-P08NMU-E	PDFY-P12NMU-E	PDFY-P15NMU-E	PDFY-P18NMU-E	
Power source		1-phase 208/230 V 60Hz					
Cooling capacity (Nominal)	*1 BTU / h	6,000	8,000	12,000	15,000	18,000	
	*1 kW	1.8	2.3	3.5	4.4	5.3	
	Power input kW	0.120/0.120	0.120/0.120	0.120/0.120	0.150/0.150	0.150/0.150	
	Current input A	0.61/0.68	0.61/0.68	0.61/0.68	0.77/0.85	0.77/0.85	
Heating capacity (Nominal)	*1 BTU / h	6,700	9,000	13,500	17,000	20,000	
	*1 kW	2.0	2.6	4.0	5.0	5.9	
	Power input kW	0.120/0.120	0.120/0.120	0.120/0.120	0.150/0.150	0.150/0.150	
	Current input A	0.61/0.68	0.61/0.68	0.61/0.68	0.77/0.85	0.77/0.85	
External finish		Galvanized					
External dimension	in.	11-5/8 x 27-31/32 x 28-15/16	11-5/8 x 27-31/32 x 28-15/16	11-5/8 x 27-31/32 x 28-15/16	11-5/8 x 37-13/16 x 28-15/16	11-5/8 x 37-13/16 x 28-15/16	
H x W x D	mm	295 x 710 x 735	295 x 710 x 735	295 x 710 x 735	295 x 960 x 735	295 x 960 x 735	
Net weight	lbs (kg)	57 (26)	57 (26)	60 (27)	71 (32)	75 (34)	
Heat exchanger		Cross fin(Aluminium fin and copper tube)					
FAN	Type x Quantity	Sirocco fan x 1		Sirocco fan x 1		Sirocco fan x 1	
	External static pressure	in. WG	0.120-0.200-0.321 (208V)	0.120-0.200-0.321 (208V)	0.120-0.200-0.321 (208V)	0.120-0.200-0.321 (208V)	0.120-0.200-0.321 (208V)
		Pa	30-50-80	30-50-80	30-50-80	30-50-80	30-50-80
		in. WG	0.161-0.241-0.401 (230V)	0.161-0.241-0.401 (230V)	0.161-0.241-0.401 (230V)	0.161-0.241-0.401 (230V)	0.161-0.241-0.401 (230V)
		Pa	40-60-100	40-60-100	40-60-100	40-60-100	40-60-100
	Motor type	1-phase induction motor					
	Motor output	kW	0.075	0.075	0.075	0.085	0.085
	Driving mechanism	Direct-driven					
	Airflow rate #2 (Low-Mid2-Mid1-High)	cfm	211-229-264-300	211-229-264-300	211-229-264-300	353-388-441-494	353-388-441-494
		m <sup>3</sup> / min	6.0-6.5-7.5-8.5	6.0-6.5-7.5-8.5	6.0-6.5-7.5-8.5	10.0-11.0-12.5-14.0	10.0-11.0-12.5-14.0
L / s		100-108-125-142	100-108-125-142	100-108-125-142	167-183-208-233	167-183-208-233	
Sound pressure level (Low-Mid2-Mid1-High)	*2 #3 dB <A>	26-28-31-34 (208V)	26-28-31-34 (208V)	26-28-31-34 (208V)	32-34-35-37 (208V)	32-34-35-37 (208V)	
	dB <A>	28-30-33-36 (230V)	28-30-33-36 (230V)	28-30-33-36 (230V)	34-36-37-39 (230V)	34-36-37-39 (230V)	
	dB <A>	-	-	-	-	-	
Air filter		Standard filter					
Diameter of refrigerant pipe (O.D.)	Liquid (R410A) in. (mm)	ø1/4 (ø6.35) Flare	ø1/4 (ø6.35) Flare	ø1/4 (ø6.35) Flare	ø1/4 (ø6.35) Flare	ø1/4 (ø6.35) Flare	
	Gas (R410A) in. (mm)	-	-	ø1/4 (ø6.35) Flare	ø1/4 (ø6.35) Flare	ø3/8 (ø9.52) Flare	
	Gas (R22) in. (mm)	ø1/2 (ø12.7) Flare	ø1/2 (ø12.7) Flare	ø1/2 (ø12.7) Flare	ø1/2 (ø12.7) Flare	ø1/2 (ø12.7) Flare	
	Gas (R22) in. (mm)	-	-	ø1/2 (ø12.7) Flare	ø1/2 (ø12.7) Flare	ø5/8 (ø15.88) Flare	
Field drain pipe diameter	in. (mm)	O.D. 1-1/4 (32)	O.D. 1-1/4 (32)	O.D. 1-1/4 (32)	O.D. 1-1/4 (32)	O.D. 1-1/4 (32)	

Model		PDFY-P24NMU-E	PDFY-P27NMU-E	PDFY-P30NMU-E	PDFY-P36NMU-E	PDFY-P48NMU-E	
Power source		1-phase 208/230 V 60Hz					
Cooling capacity (Nominal)	*1 BTU / h	24,000	27,000	30,000	36,000	48,000	
	*1 kW	7.0	7.9	8.8	10.6	14.1	
	Power input kW	0.170/0.170	0.180/0.180	0.210/0.210	0.290/0.290	0.390/0.390	
	Current input A	0.87/0.96	0.94/1.04	1.07/1.19	1.48/1.64	1.99/2.21	
Heating capacity (Nominal)	*1 BTU / h	27,000	30,000	34,000	40,000	54,000	
	*1 kW	7.9	8.8	10.0	11.7	15.8	
	Power input kW	0.170/0.170	0.180/0.180	0.210/0.210	0.290/0.290	0.390/0.390	
	Current input A	0.87/0.96	0.94/1.04	1.07/1.19	1.48/1.64	1.99/2.21	
External finish		Galvanized					
External dimension	in.	11-5/8 x 45-11/16 x 28-15/16	11-5/8 x 45-11/16 x 28-15/16	11-5/8 x 45-11/16 x 28-15/16	13-7/32 x 59-15/32 x 30-17/32	13-7/32 x 59-15/32 x 30-17/32	
H x W x D	mm	295 x 1,160 x 735	295 x 1,160 x 735	295 x 1,160 x 735	335 x 1,510 x 775	335 x 1,510 x 775	
Net weight	lbs (kg)	86 (39)	86 (39)	86 (39)	115 (52)	115 (52)	
Heat exchanger		Cross fin(Aluminium fin and copper tube)					
FAN	Type x Quantity	Sirocco fan x 2		Sirocco fan x 2		Sirocco fan x 2	
	External static pressure	in. WG	0.120-0.200-0.321 (208V)	0.120-0.200-0.321 (208V)	0.120-0.200-0.401 (208V)	0.200-0.401-0.522 (208V)	0.200-0.401-0.522 (208V)
		Pa	30-50-80	30-50-80	30-50-100	50-100-130	50-100-130
		in. WG	0.161-0.241-0.401 (230V)	0.161-0.241-0.401 (230V)	0.161-0.241-0.462 (230V)	0.241-0.462-0.602 (230V)	0.241-0.462-0.602 (230V)
		Pa	40-60-100	40-60-100	40-60-115	60-115-150	60-115-150
	Motor type	1-phase induction motor					
	Motor output	kW	0.095	0.095	0.095	0.140	0.190
	Driving mechanism	Direct-driven					
	Airflow rate #2 (Low-Mid2-Mid1-High)	cfm	441-494-565-635	477-547-618-689	494-582-653-741	688-988	847-1,200
		m <sup>3</sup> / min	12.5-14.0-16.0-18.0	13.5-15.5-17.5-19.5	14.0-16.5-18.5-21.0	19.5-28.0	24.0-34.0
L / s		208-233-267-300	225-258-292-325	233-275-308-350	325-467	400-567	
Sound pressure level (Low-Mid2-Mid1-High)	*2 #3 dB <A>	28-32-34-37 (208V)	31-35-37-40 (208V)	32-35-38-40 (208V)	36-44 (208V)	42-46 (208V)	
	dB <A>	30-34-36-39 (230V)	32-36-38-40 (230V)	34-37-40-42 (230V)	38-45 (230V)	43-47 (230V)	
	dB <A>	-	-	-	-	-	
Air filter		Standard filter					
Diameter of refrigerant pipe (O.D.)	Liquid (R410A) in. (mm)	ø3/8 (ø9.52) Flare	ø3/8 (ø9.52) Flare	ø3/8 (ø9.52) Flare	ø3/8 (ø9.52) Flare	ø3/8 (ø9.52) Flare	
	Gas (R410A) in. (mm)	ø3/8 (ø9.52) Flare	ø3/8 (ø9.52) Flare	ø3/8 (ø9.52) Flare	ø3/8 (ø9.52) Flare	ø3/8 (ø9.52) Flare	
	Gas (R22) in. (mm)	ø5/8 (ø15.88) Flare	ø5/8 (ø15.88) Flare	ø5/8 (ø15.88) Flare	ø5/8 (ø15.88) Flare	ø5/8 (ø15.88) Flare	
	Gas (R22) in. (mm)	ø5/8 (ø15.88) Flare	ø5/8 (ø15.88) Flare	ø5/8 (ø15.88) Flare	ø3/4 (ø19.05) Flare	ø3/4 (ø19.05) Flare	
Field drain pipe diameter	in. (mm)	O.D. 1-1/4 (32)	O.D. 1-1/4 (32)	O.D. 1-1/4 (32)	O.D. 1-1/4 (32)	O.D. 1-1/4 (32)	

\*1 Cooling / Heating capacity indicates the maximum value at operation under the following condition.  
 Cooling: Indoor 80°F (26.7°C) D.B. / 67°F (19.4°C) W.B., Outdoor 95°F (35°C) D.B.  
 Pipe length 25ft. (7.6m), Level difference 0ft. (0m)  
 Heating: Indoor 70°F (21.1°C) D.B., Outdoor 47°F (8.3°C) D.B. / 43°F (6.1°C) W.B.  
 Pipe length 25ft. (7.6m), Level difference 0ft. (0m)

\*2 Airflow rate / Sound pressure level are in (low-middle2-middle1-high) or (low-high).  
 \*3 It is measured in anechoic room.

PDFY-P NMU-E

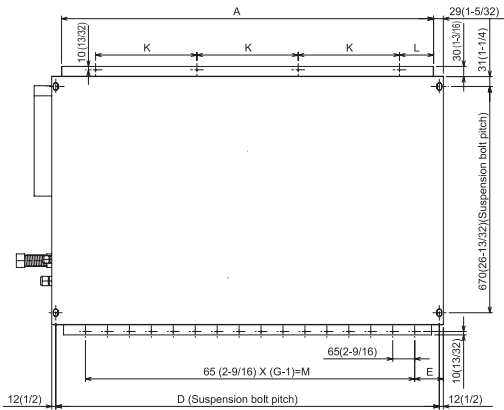
OPTIONAL PARTS

Description	Model	Applicable capacity
Drain pump	PAC-KD02DM-FA	P06, P08, P12, P15, P18, P24, P27, P30, P36, P48
	PAC-KD32EDF-F	P06, P08, P12
Round duct flange	PAC-KD50EDF-F	P15, P18
	PAC-KD80EDF-F	P24, P27, P30
	PAC-KD125EDF-F	P36, P48
External heater adaptor	PAC-YU24HT-F	P06, P08, P12, P15, P18, P24, P27, P30, P36, P48
Maintenance panel with air intake	MCMP-P36DSW-H	P06, P08, P12
	MCMP-P56DSW-H	P15, P18
	MCMP-P90DSW-H	P24, P27, P30
	MCMP-P160DSW-H	P36, P48

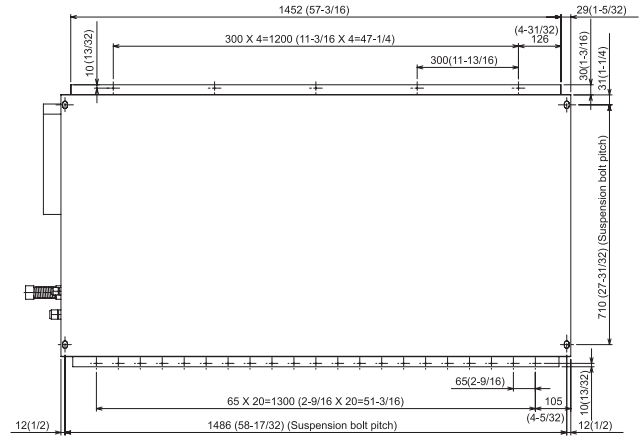
PDFY-P06/08/12/15/18/24/27/30NMU-E

PDFY-P36/48NMU-E

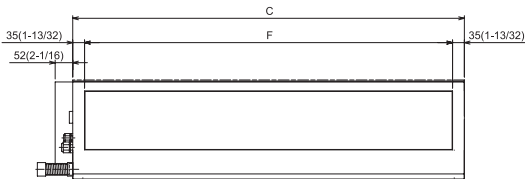
Upper view



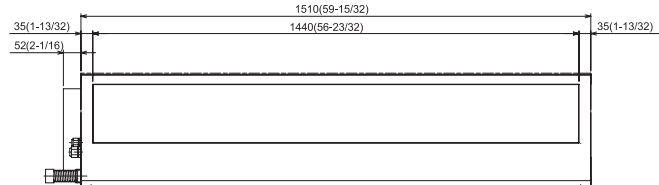
Upper view



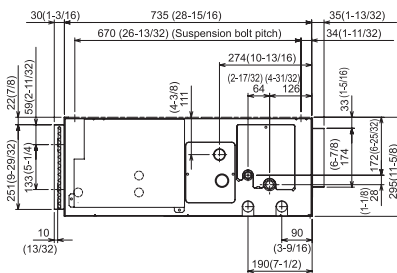
Front view



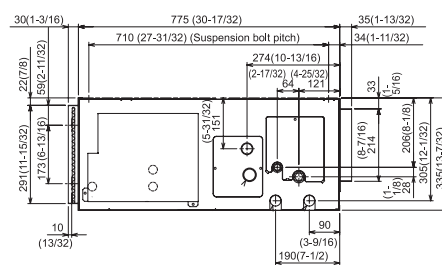
Front view



Side view



Side view



Model	A	C	D	E	F	G	K	L	M
PDFY-P06-08-12NMU-E	652 (25-11/16)	710 (27-31/32)	686 (27-13/32)	95 (3-3/4)	636 (25-1/16)	9	200 (7-7/8)	126 (4-31/32)	520 (20-15/32)
PDFY-P15NMU-E	902 (35-17/32)	960 (37-13/16)	936 (36-7/8)	90 (3-9/16)	886 (34-29/32)	13	300 (11-13/16)	151 (5-31/32)	780 (30-23/32)
PDFY-P18NMU-E	902 (35-17/32)	960 (37-13/16)	936 (36-7/8)	90 (3-9/16)	886 (34-29/32)	13	300 (11-13/16)	151 (5-31/32)	780 (30-23/32)
PDFY-P24-27-30NMU-E	1102 (43-13/32)	1160 (45-11/16)	1136 (44-3/4)	92.5 (3-21/32)	1086 (42-25/32)	16	300 (11-13/16)	101 (4)	975 (38-3/4)