

Amantii 60-TRU-VIEW-XL
Stunning 3-sided electric fireplace



Sierra Flame Free Stand electric
fireplace with ICE media



2017 CATALOG

AMANTII & SIERRA FLAME ELECTRIC FIREPLACES



Amantii

Follow the ↓ for direction heat is emitted

PANORAMA SERIES - INDOOR / OUTDOOR

All Panorama Series models are rated for **indoor or outdoor** spaces. You choose what works best for your commercial or residential applications.

IDEAL APPLICATIONS

- Residential spaces
- Patios
- Outdoor spaces
- Commercial spaces
- Restaurants
- New construction or renovations



BI-40-DEEP



BI-50-DEEP



BI-60-DEEP



BI-72-DEEP



BI-88-DEEP

KEY FEATURES: Deep Models

Vibrant multi-colored state-of-the-art FIRE & ICE® flame that is easily changed from blue to purple to rose to violet to orange or yellow with just a click of the remote. Three color strips generate more flame options that ever. These built-in only models can be used for indoor or outdoor use. Cover required for outdoor installations.

- Heater & Fan
Flame operates with or without heat
- Perfect for zone heating. Approx. 400-500 sq. ft.
4800 BTUs
- Thermostat hard-wire ready
Electrical hard-wire ready
- Illuminate decorative media like never before with ambient canopy lighting in 13 colors
- Deep 12" comes with large glass chunks, clear & blue diamond fire glass media, **an 11 piece log set**, and black steel surround that can be installed if preferred
- Design Specialties hand finished surround option available for additional purchase in more than 30 colors. See page 15 for more details.



Cover is available for additional purchase and must be used in outdoor installations



BI-40-SLIM



BI-50-SLIM



BI-60-SLIM



BI-72-SLIM

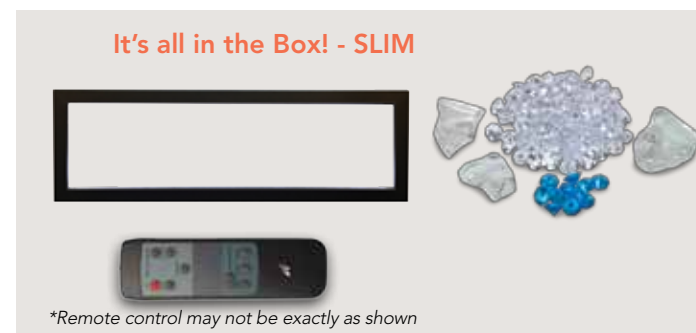


BI-88-SLIM

KEY FEATURES: Slim Models

Vibrant multi-colored state-of-the-art FIRE & ICE® flame that is easily changed from blue to purple to rose to violet to orange or yellow with just a click of the remote. Three built-in only models can be used for indoor or outdoor use. Cover required for outdoor installations.

- Heater & Fan
Flame operates with or without heat
- Perfect for zone heating. Approx. 400-500 sq. ft.
4800 BTUs
- Thermostat hard-wire ready
Electrical hard-wire ready
- Slim 6-3/4" comes with large glass chunks, clear & blue diamond fire glass media, black steel surround that can be installed if preferred
- Design Specialties hand finished surround option available for additional purchase in more than 30 colors. See page 15 for more details.



Cover is available for additional purchase and must be used in outdoor installations



TRU-VIEW XL

IDEAL APPLICATIONS

- Residential spaces
- Patios
- Outdoor spaces
- Commercial spaces
- Restaurants
- New construction or renovations



50-TRU-VIEW-XL



60-TRU-VIEW-XL



72-TRU-VIEW-XL

INSTALL FOUR WAYS

Impressive 14-1/4" depth



3 sides open



Left side open



Right side open



Both sides closed

Units shown above are not installed, finishing materials are to be built flush to the lip for a clean face finish. No trim or surround is included.

FEATURES: TRU VIEW Models

Our 3-sided electric fireplace is a true innovation! Vibrant multi-colored state-of-the-art FIRE & ICE® flame is easily changed from blue to purple to rose to violet to orange or yellow with just a click of the remote. The stunning multi-color flame presentation and unique media options can now be viewed from almost any angle. Four installation configurations, 3 size options, extra deep tray, ambient canopy lighting to illuminate media and rated for indoor or outdoor use. Perfect for any space, inside or out, including bathrooms. Cover required when used in outdoor applications - not shown. Built-In only. No trim or surround included.

- Heater & Fan
Flame operates with or without heat
- Perfect for zone heating. Approx. 400-500 sq. ft.
4800 BTUs
- Thermostat hard-wire ready
Electrical hard-wire ready
- Illuminate decorative media like never before with ambient canopy lighting in 13 colors
- 14-1/4" deep comes with large glass chunks, clear & blue diamond fire glass media, and our new Designer media kit that includes a deluxe 11 piece log set, black stones, rocks, pebbles, two kinds of vermiculite chips and two kinds of vermiculite embers



TRU-VIEW-60 Electric Fireplace shown with deluxe log set

LINEAR WM-FM & WM-FML

Follow the ↓ for direction heat is emitted

WALL MOUNT FLUSH MOUNT GLASS SURROUND

LED Lighting • Heater & Fan



IDEAL APPLICATIONS

- Residential spaces
- Commercial spaces
- Restaurants
- New construction
- Renovation projects
- Places where construction is not an option (wall mount)



KEY FEATURES: WM-FM

Vibrant multi-colored state-of-the-art FIRE & ICE® flame that is easily changed from blue to purple to rose to violet to orange or yellow with just a click of the remote. Three color strips generate more flame options than ever. Can be wall mounted or built-in flush.

- Heater & Fan
Flame operates with or without heat
- Perfect for zone heating. Approx. 400-500 sq. ft. 4800 BTUs
- Thermostat hard-wire ready
Electrical hard-wire ready
- Surround back-lighting in 13 colors
- New driftwood style log set included, plus your choice of ICE or EMBER decorative media
- White glass surrounds and Design Specialties options available for purchase. See pages 13 and 15 for more details.

Remote control and log set, as well as choice of decorative media is included 'in' the box.



Note: WM-FM-50-BG does not have the surround back-light feature.



WALL MOUNT FLUSH MOUNT STEEL SERIES

All WM-FML Steel Series models come with back-lit moodlighting.

NEW!



IDEAL APPLICATIONS

- Residential spaces
- Commercial spaces
- Restaurants
- New construction
- Renovation projects
- Places where construction is not an option (wall mount)



KEY FEATURES: WM-FML-STL

Introducing Sierra Flame by Amantii's newest linear series of electric fireplaces featuring a deep charcoal colored steel surround. The steel surround has aesthetic proportions and features a touch pad with a numerical temperature display. Heat is emitted through the face below the glass viewing area allowing for a flush mount installation. If recessing is not an option, this model is also wall mountable and perfect in apartments or in places where renovation or construction is not an option.

Available in 7 sizes, you'll find a unit that is perfect for any space in your home, business or commercial space. Boasting our FIRE & ICE® presentation with three color LED strips allowing for a multi-color flame options. With just a click of the included remote control choose from blue, rose, violet, yellow or orange colored flames. The WM-FML-STL series comes standard with clear decorative media. Further media options available for additional purchase, see page 12.

- Heater & Fan
- Perfect for zone heating. Approx. 400-500 sq. ft. 4800 BTUs
- Hard-wire ready
Thermostat hard-wire ready
- 13 colors of surround back-lit moodlighting
- FIRE & ICE® Flame presentation
Three light strips allow for yellow, orange, blue, violet and rose colored flames



*Remote control may not be exactly as shown



WM-FML-88-9623-STL shown with Sable media and Orange FIRE & ICE® flame presentation

INSERTS

Follow the ↑ for direction heat is emitted

IDEAL APPLICATIONS

- Retrofits
- Into existing metal or masonry fireplaces
- New construction
- Renovation projects

INSERTS

LED Lighting • Heater & Fan



INSERT-26-3825-BG



INSERT-30-4026-BG



INSERT-33-4230-BG

KEY FEATURES: Inserts

Perfect alternative to a gas insert. Breathe new life into an older masonry fireplace. Vibrant multi-colored state-of-the-art FIRE & ICE® flame that is easily changed from blue to purple to violet to orange or yellow with just a click of the remote. Three color strips generate more flame options than ever.

- Heater & Fan
Flame operates with or without heat
- Approx. 400-500 sq. ft. 4800 BTUs
- Thermostat hard-wire ready
Electrical hard-wire ready
- Remote for flame & heater
- New style log set included, plus your choice of ICE or EMBER decorative media
- White glass surrounds and Design Specialties options available for purchase. See pages 13 and 15 for more details.



Remote control and log set, as well as choice of decorative media is included 'in' the box.



ICE Media Set

AND your choice of ICE or EMBER decorative media



Clear Harvest Moon Sun Tea

EMBER Media Set

INSERTS



INS-FM-30



INS-FM-34

IDEAL APPLICATIONS

- Retrofits
- Into existing metal or masonry fireplaces
- New construction
- Renovation projects



Optional Design Specialties hand painted overlays are available, the unit comes standard with a black overlay.

KEY FEATURES: Inserts

Add new life to existing wood or masonry fireplaces with Sierra Flame's Flush Mount Inserts. The stunning and life-like 'gradient' flame is intensified by the visually impressive traditional log set, included with your unit. Finished with a black steel surround and overlay the versatile design of these inserts will work with any décor style. Create your own style with an optional custom finish overlay.

- Heater & Fan
- Perfect for zone heating. Approx. 400-500 sq. ft. 4800 BTUs
- Hard-wire ready
Thermostat hard-wire ready
- Stunning 'Gradient' Flame
- Design Specialties hand finished overlay options available for purchase in more than 30 colors. See page 15.

INCLUDED MEDIA

Large Log Set (shown in models)

FREE STAND



FREE STAND

IDEAL APPLICATIONS

- Perfect for the cabin
- Basements
- Living rooms
- Den or office
- Bedrooms



KEY FEATURES: Free Stand

A distinctly European styled free standing electric fireplace from Sierra Flame by Amantii. This Fireplace features a beveled glass viewing area that gives an almost 'see-thru' effect on three sides.

With no installation boundaries, no need for mounting brackets or building into a wall, this free stand model goes in any room you like. Virtually no assembly required – just simply plug in and enjoy!

- Heater & Fan
- Temperature maintenance control - keep your space warm & cozy
- Perfect for zone heating. Approx. 400-500 sq. ft.
- Stunning flame - from contemporary to life-like traditional
- Change the appearance of included media like never before with the NEW LED ambient canopy lighting in 13 colors.



Hz-08 Sable



FREE STAND shown with 11 piece log set

ZERO CLEARANCE

Follow the ↑ for direction heat is emitted

IDEAL APPLICATIONS

- New construction
- Renovation projects
- Commercial spaces
- Residential spaces



ZERO CLEARANCE

LED Lighting • Heater & Fan



ZECL-26-2923-BG

ZECL-30-3226-BG

Flush Mounts - Heat emitted from the front



ZECL-26-2923-FLUSHMNT-BG

ZECL-30-3226-FLUSHMNT-BG



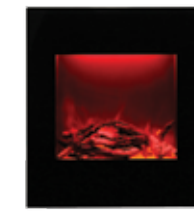
ZECL-33-3624-BG



ZECL-39-4134-BG



ZECL-2939-BG



WM-BI-2428-VLR-BG

ZECL-31 - Extra deep tray with choice of steel surround

Arch Style Surround



ZECL-31-3228-STL-ARCH

Square Style Surround



ZECL-31-3228-STL-SQR

KEY FEATURES: Zero Clearance

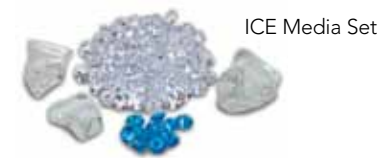
Designed for new construction or renovations. Vibrant multi-colored state-of-the-art FIRE & ICE® flame that is easily changed from blue to purple to violet to orange or yellow with just a click of the remote. Three color strips generate more flame options than ever.

- Heater & Fan
Flame operates with or without heat
- Heat is vented out the top *except on flush mount models where heat is vented from the face*
Approx. 400-500 sq. ft.
4800 BTUs
- Thermostat hard-wire ready
Electrical hard-wire ready
- Remote for flame & heater
- New style log set included, plus your choice of ICE or EMBER decorative media.
- White glass surrounds and Design Specialties options available for purchase.
See pages 13 and 15 for more details.

Remote control and log set, as well as choice of decorative media is included 'in' the box.



Log set is unique to each model, and may not be exactly as shown.



AND your choice of ICE or EMBER decorative media



Clear Harvest Moon Sun Tea
EMBER Media Set



ZECL-31-3228-STL-ARCH shown with included log set

ZERO CLEARANCE

Flush Mount Zero Clearance • Heater & Fan



ZC-FM-37

ZC-FM-345

KEY FEATURES: Flush Mount Zero Clearance

Sierra Flame's Flush Mount Zero Clearance series offers a perfect balance of traditional and contemporary design. The black steel surround with overlay makes a statement in any space and the vibrant 'gradient' flame comes to life with the visually impressive traditional log set, included with your unit. A remote control conveniently adjusts the flame and brightness as you sit back and enjoy the warmth.

- Heater & Fan
- Perfect for zone heating. Approx. 400-500 sq. ft. 4800 BTUs
- Hard-wire ready
- Stunning 'Gradient' Flame
- Design Specialties hand finished overlay options available for purchase in more than 30 colors. See page 15.

Overlays shown in room photos (right) are optional Design Specialties hand painted overlays, the unit comes standard with a black overlay.

INCLUDED MEDIA

Log Set (shown in models)

IDEAL APPLICATIONS

- New construction
- Renovation projects
- Commercial spaces
- Residential spaces



ZC-FM-45 electric fireplace with Rustic Copper overlay



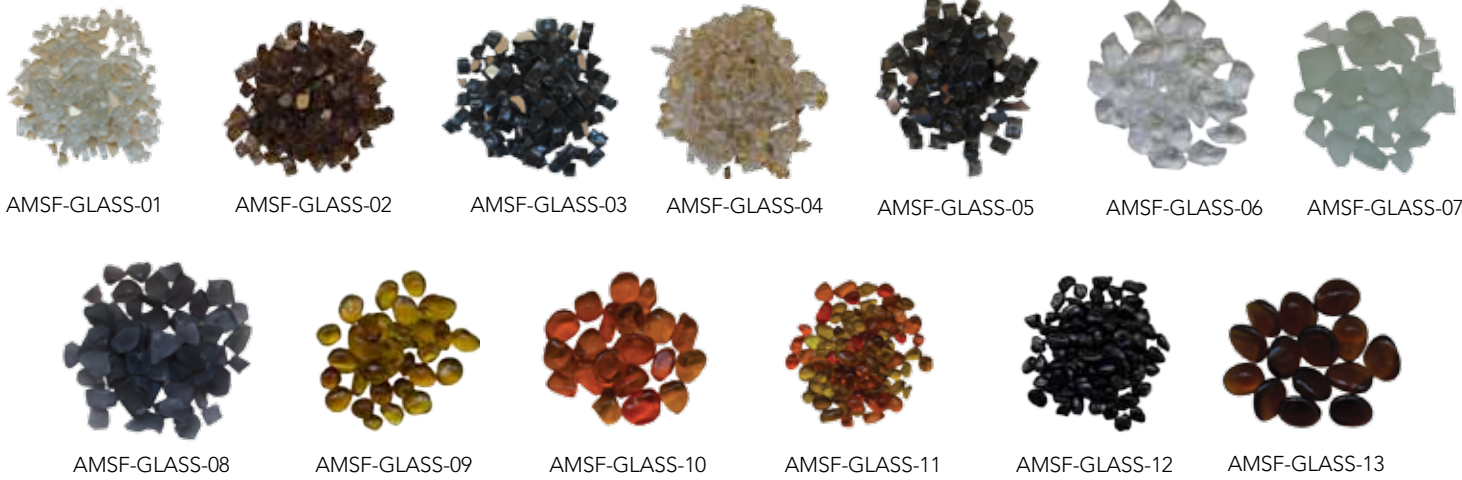
ZC-FM-37 electric fireplace with Cast Iron overlay

FIRE GLASS & MEDIA OPTIONS



Amantii / Sierra Flame decorative fire glass media is a beautiful addition to your electric fireplace. Turn your fireplace into a expressive work of art by simply adding our decorative fire glass media. Our fire glass adds a distinctly modern feel to your electric fireplace - mix colors and textures for a unique appearance.

Always wear protective gloves when handling fire glass media. One 5lb container of media will cover 1 square foot.



DESIGNER MEDIA KITS

DESIGN-MEDIA-6PCE



DESIGN-MEDIA-11PCE



DESIGN-MEDIA-14PCE



Images are not to scale, please visit your local dealer to view the actual accessories.

Variations in the color and shade are inherent in all printing processes, the actual colors may vary slightly from those shown in this brochure.

Please visit your local dealer to view a sample.

Note: Log sets and Designer Media Kits will fit in all sizes of the following models - Panorama DEEP and TRU-VIEW-XL ONLY (For the Design Media 11 piece & Design Media 14 piece, depending on the size of the fireplace model, some logs may not be needed.)

DECORATIVE MEDIA OPTIONS



WHITE GLASS SURROUND



INS-30 Electric Fireplace shown with ICE media and optional White Glass surround



Brighten up any space with a cool contemporary white glass surround. White glass surrounds are optional for additional purchase and are available for the shown models only. Ships in separate box, must ship with unit. Dealers see price list for white glass surround model numbers.

DESIGN SPECIALTIES OVERLAYS

These hand-crafted steel overlays bring a traditional elegance to any room. Designed for an exceptional fit and finish with unparalleled craftsmanship and made to order by skilled metal workers.

ELECTRIC MODELS

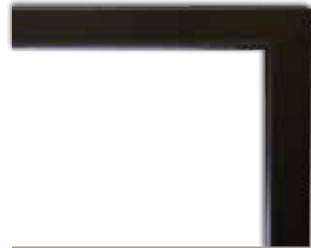


Surround

Amantii
DEEP Surrounds
SLIM Surrounds

Overlay

Sierra Flame
Insert Overlay
Zero Clearance Overlay



Mission

Amantii
WM-FM 48
ZECL 39
INSERT 30



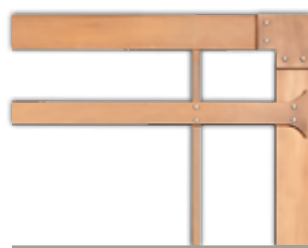
Laurel

Amantii
WM-FM 48
ZECL 39
INSERT 30



Blacksmith

Amantii
WM-FM 48
ZECL 39
INSERT 30



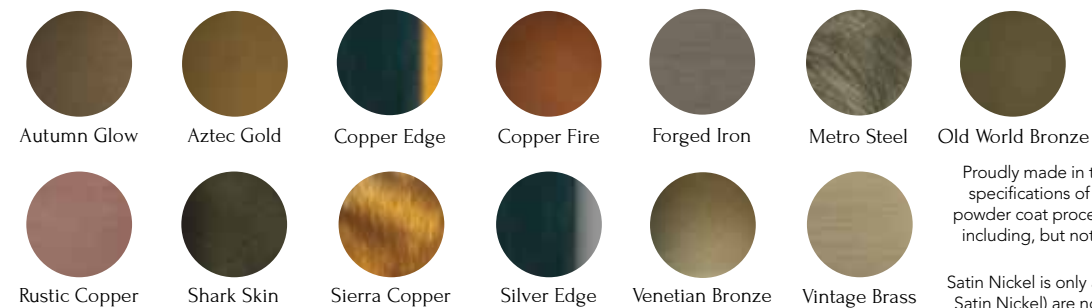
DESIGN SPECIALTIES STEEL FINISHES & POWDER COAT



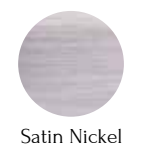
STANDARD FINISHES



ARTISAN FINISHES



SPECIALTY FINISHES



Proudly made in the USA, each Design Specialties door is hand crafted to the specifications of each order. Due to the nature of the anodizing, plating and powder coat processes, slight variations in color may occur. In particular, finishes including, but not limited to, Forged Iron, Sierra Copper, Rustic Copper, Black Silver Edge and Black Copper Edge.

Satin Nickel is only available on the Laurel overlay. Copper Edge, Silver edge (and Satin Nickel) are not available on the Amantii DEEP or SLIM surrounds or on the Sierra Flame INSERT or ZERO Clearance overlays.



INSERT 30-4026 Blacksmith overlay (optional Two-Tone for Blacksmith ONLY)



WM-FM 48 Mission overlay in Cast Iron



ZECL-39 Laurel overlay in Satin Nickel



DEEP or SLIM Panorama Series surround in Aztec Gold



INS-FM-30 overlay in Metro Steel



INS-FM-34 overlay in Sierra Copper



ZC-FM-37 overlay in Cast Iron



ZC-FM-45 overlay in Rustic Copper



TO SEE OUR COMPLETE LINE
OF GAS FIREPLACES:
WWW.SIERRAFLAME.COM



65" Austin gas fireplace with
Clean Face surround



Abbot 30IN gas fireplace with logs

February 2017

Distributed By:

We reserve the right to update products, specifications and dimensions are subject to change. Please refer to the product manual to verify measurements and clearance requirements. All local building codes must be followed.

Visit our online showrooms at:

Amantii

www.amantii.com



www.sierraflame.com

Phone: 888.406.8764

Fax: 877.498.4206