



# FIRES *of Tradition*



## **Install Instructions for Rebate Wood Mantels**

*Please read this manual before installing the suite. This manual should remain with the homeowner.*

040908

**Index**

***Page #3 Installing the C channels***

***Page #4 Proper locating of the firebox***

***Page #5-9 Installing the Riversdale***

***Page #10-12 Installing the Selby***

***Page #12-13 Installing the Kingston***

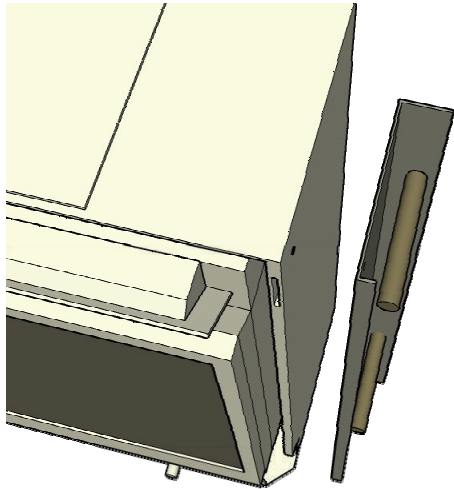
***Page #14-15 Installing the Niagara***

***Page #16-20 Installing the Barrington***

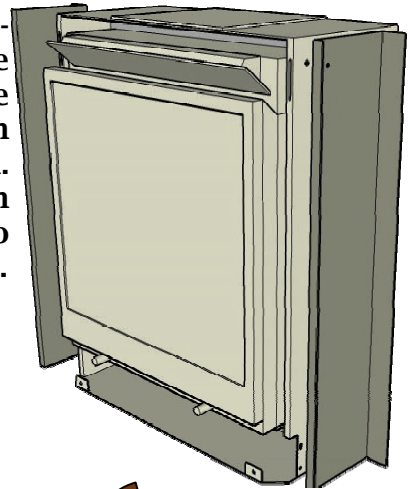
***Page #21 Care and Maintenance***

**Note: The fireplace manufacturer's technical specifications take precedence over any thing detailed in the following. All clearances or installation requirements detailed in the fireplace manufactures installation manual or the local building code should be strictly followed.**

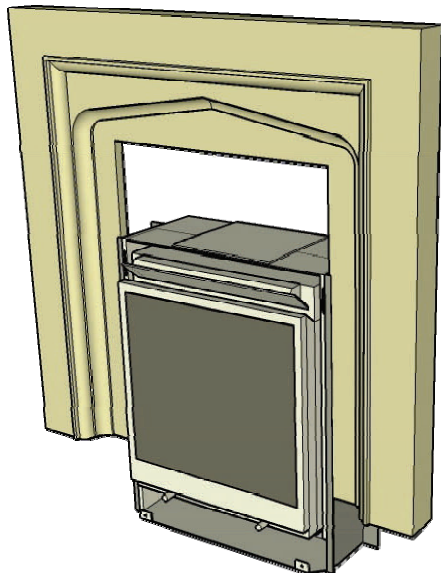
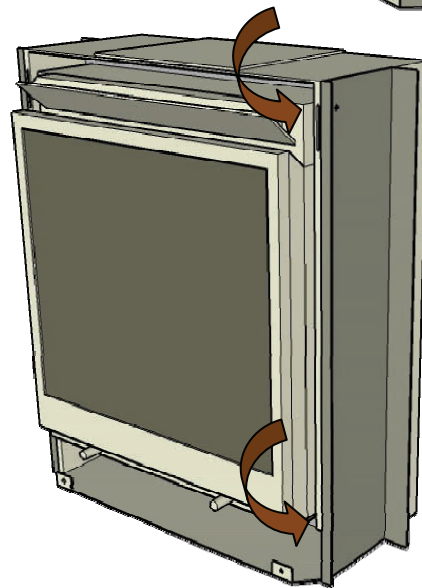
## Assembling the 'C' channels & backpanels



The 'C' channels are attached to the sides of the outer 530 box, and the backpanels are 'slid' down into the channels created. These backpanels are then held in place by the two threaded bolts from behind.



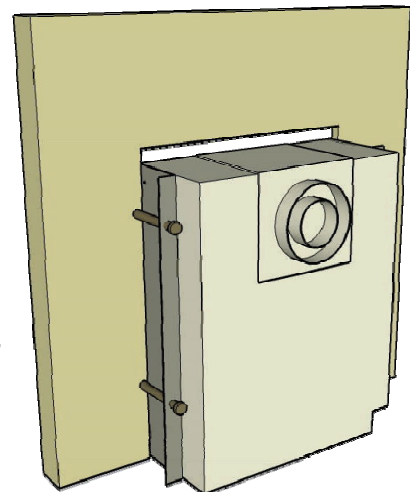
The screws that hold the C channels in place are to be run into the two holes indicated from inside the obox through the wall of the obox, and into the pre-drilled hole in the C channel. [ They will not hold in the channels in place if you run them through the C channel 'into' the side of the obox.



The backpanel can now be carefully lowered down the channel that is created. Insure that this is lowered evenly, and does not bind against the sides of the channel, as this may damage the inside corners of the backpanel.

Two bolts can be threaded into the back of the C channel, and firmed up against the backpanel.

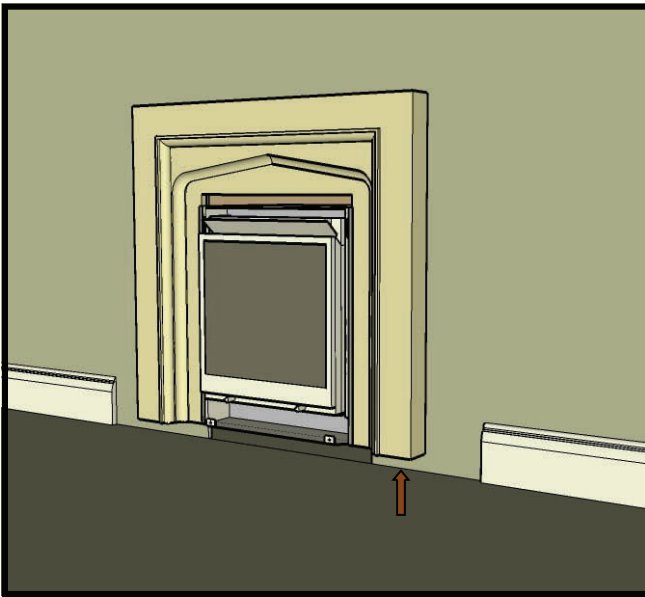
Only tighten up finger tight on the backpanel!



## Locating the firebox in relationship to the mantel

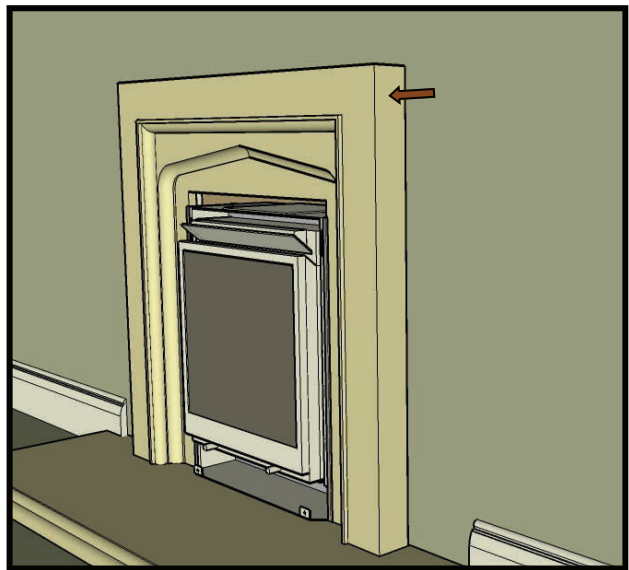
It is prudent to assemble some of the pcs as a dry run before you begin to install the system, to insure that you understand how all parts fit together. This is also an excellent time to check the relationship of these pcs to the firebox itself, to insure that it is installed at the correct height, and is in the correct position relative to the wall.

Carefully lay out the boxes in an area of the room where they will be out of the way, and open them up. Remove any loose packing, and with care, pull the pieces out and lay them down on the floor where they can individually be accessed.



**NOTE-** The fireplace must be installed off the floor to account for the height of the hearth. The total height that the unit must sit at is equal to the height of the hearth that is being installed. This is measured from the finished floor to the base of the fireplace. If the measurement is greater the unit will sit higher than the hearth, resulting in a gap between the fireplace and the hearth.

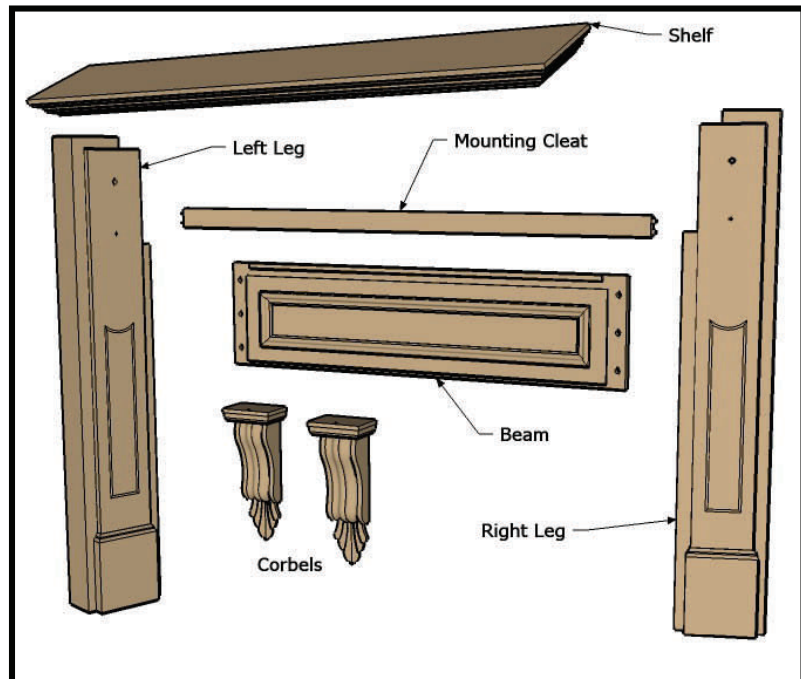
The same issue of bringing the engine forward of the wall applies to all rebate mantels. If you are using any of the backpanels other than the Windsor, first install the C channels as shown on page 8. The best way to locate the engine relative to the drywall face is to do a dry fit before the 530 engine is installed. By setting the pcs in position, and making pencil indications on the floor, you can insure that all of the components are properly located. Make sure, however, that the flat front of the backpanel used rests 3" ahead of the drywall for all rebate mantels.



Before you begin to install the Valor gas fireplace, take the time to completely read this manual, and to familiarize yourself with all of the components that are required to complete the installation. This is critical to make sure that you have a complete understanding of the inter relationship of these components. Failure to do so will result in a poor fitting mantel, and require costly back tracking.

**Riversdale Rebate**

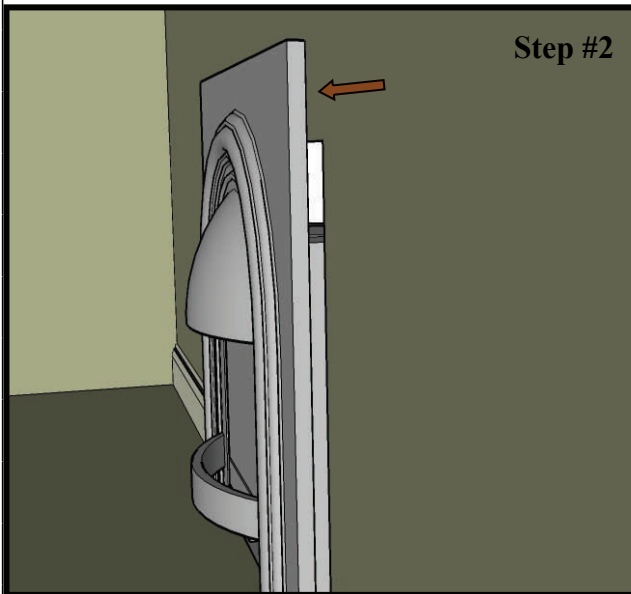
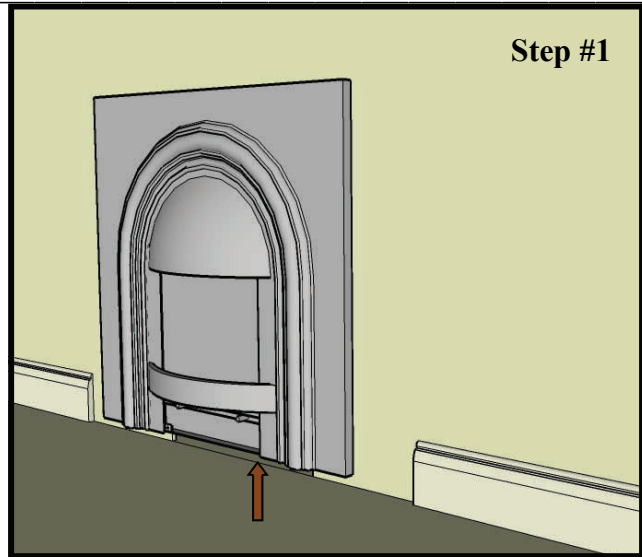
- 1 pc left leg
- 1 pc right leg
- 1 pc beam
- 2 pcs corbels
- 1 pc mounting cleat
- 1 pc shelf



It is prudent to assemble some of the pcs as a dry run before you begin to install the system, to insure that you understand how all parts fit together. This is also an excellent time to check the relationship of these pcs to the firebox itself, to insure that it is installed at the correct height, and is in the correct position relative to the wall.

Carefully lay out the boxes in an area of the room where they will be out of the way, and open them up. Remove any loose packing, and with care, pull the pieces out and lay them down on the floor where they can individually be accessed.

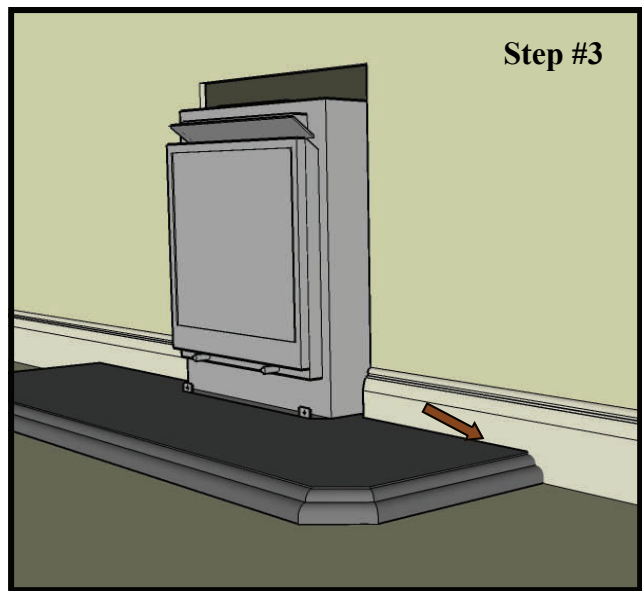
**NOTE-** The fireplace must be installed off the floor to account for the height of the hearth. The total height that the unit must sit at is equal to the height of the hearth that is being installed. This is measured from the finished floor to the base of the fireplace. If the measurement is greater the unit will sit higher than the hearth, resulting in a gap between the fireplace and the hearth.



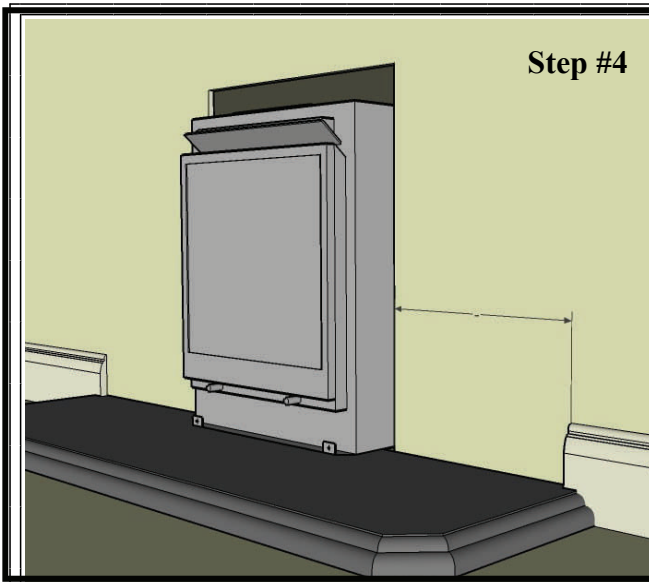
**NOTE-** The fireplace front must not be installed flush with the wall, as there will not be enough adjustment in the front to bring it flush with the back of the surround. The fireplace should be installed so that the front flat section of the Windsor face is 3" in front of the drywall to accommodate the depth [also known as the 'rebate' or the 'return'] of the mantel. If this measurement is maintained the Windsor front will snug up nicely against the back opening of the mantel.

At all times store, carry and move the hearth on edge. Do not carry hearth flat to avoid cracking in the middle. The hearth must be set directly on the floor. If there is a carpet, mark the perimeter of the hearth on the carpet and cut the carpet accordingly.

If there is a baseboard, carefully set the hearth into position and mark the base board where it must be cut. Make sure that the hearth is centered to the centre mark on the wall.



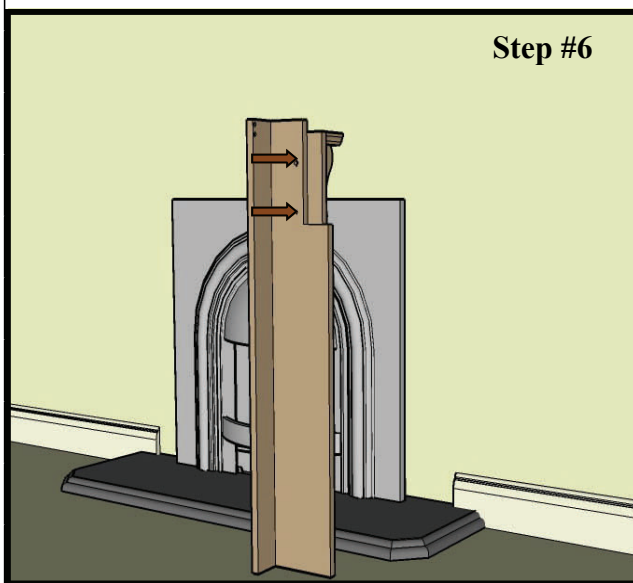
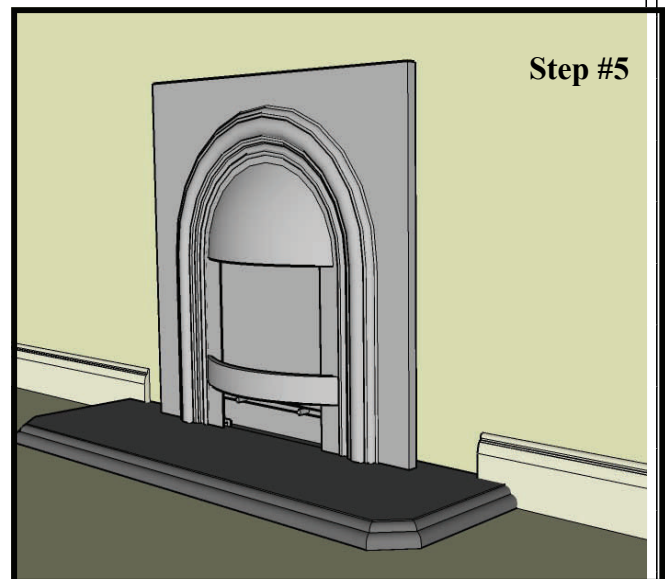
INSTALL INSTRUCTIONS FOR REBATE WOOD MANTELS



Assemble the mantel [see below], and set it carefully into place centered on the firebox. Mark the baseboard where the outside foot of the mantel on each side stops. Cut the baseboard accordingly. Alternatively, the baseboard can be removed and trimmed to fit the hearth and mantel once they are fully installed.

Use a fast set adhesive such as Kerakwik M to secure the hearth to the floor. Spread the adhesive across the bottom of the hearth where it comes in contact with the floor. Pick up the hearth on edge and lay the back edge against the wall. Slowly lower the leading edge and work the hearth back and forth to insure good adhesion. Wipe off excess adhesive with a damp cloth.

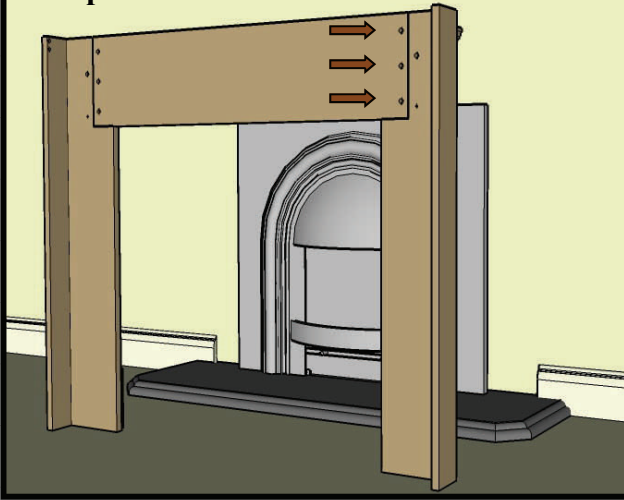
Install the Windsor front.



Install the corbels on the legs by inserting the bolt, washer and lock nut into the upper hole in the back of the mantel leg. Also install the screw in the lower hole which locks the corbel into position.

INSTALL INSTRUCTIONS FOR REBATE WOOD MANTELS

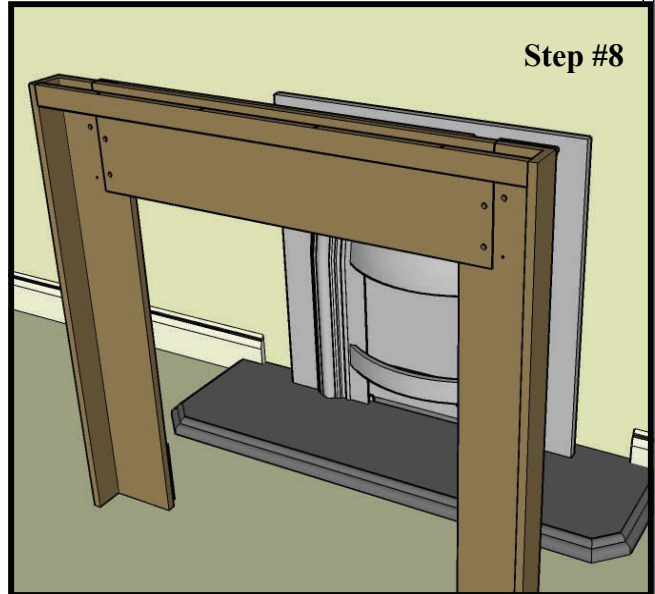
**Step #7**



**Assembled mantel without shelf, showing the mounting cleat in position .**

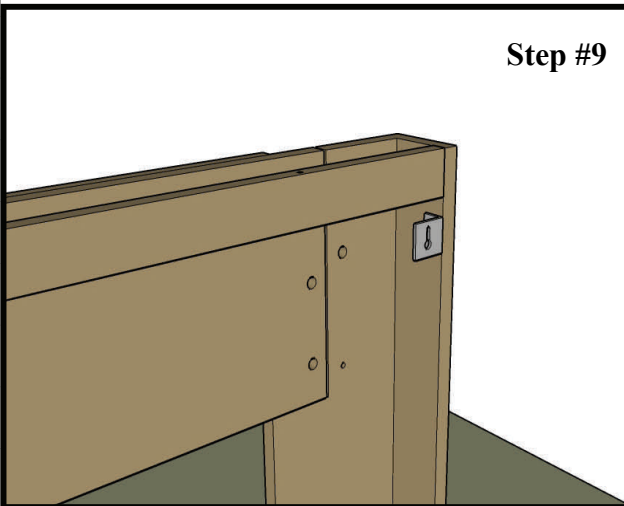
Once you have installed both corbels, carefully set the center beam and the mounting cleat into position. From the back of the mantel, secure the beam by using the 3 screws provided into the three holes on each side of the beam.

**Step #8**



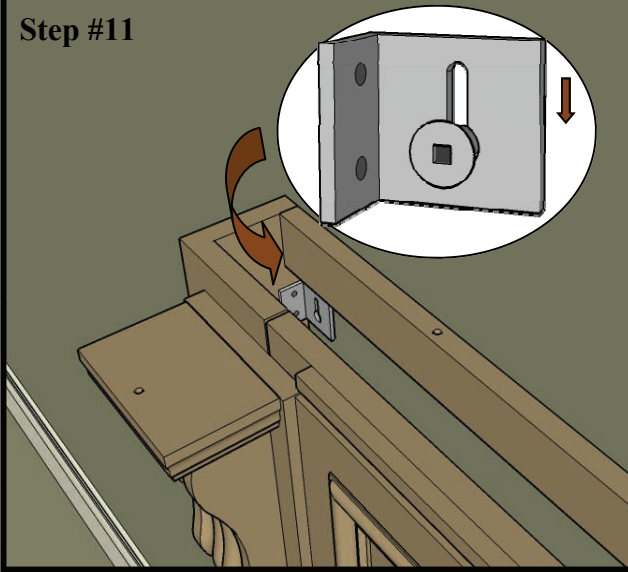
Screw the two key holed 'L' brackets to each side of the inside return of the leg, near the top. Make sure that the keyhole is located 'upside down'.

**Step #9**





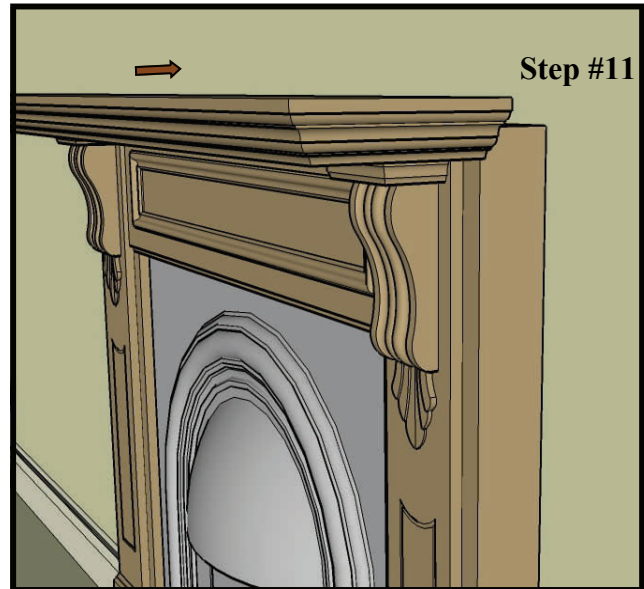
**Step #11**



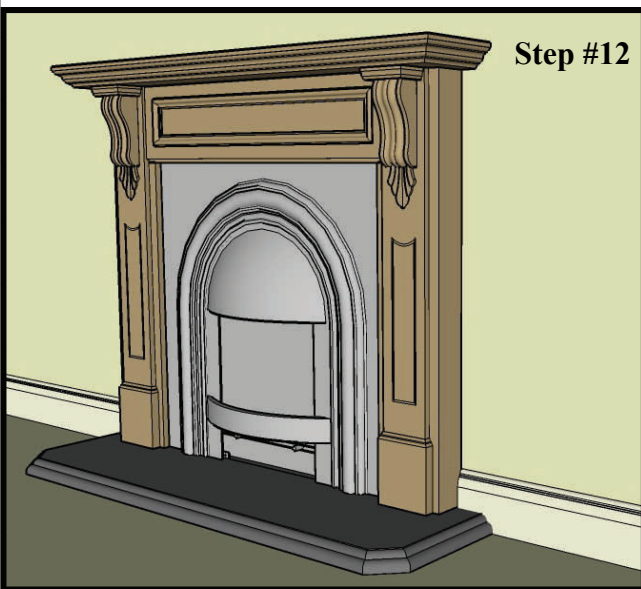
Place the mantel into final position on the wall, and mark the center of the top of the keyhole circle in the keyhole on each leg. Remove the mantel, and install the drywall plug centered on the mark you have just made. Set the screw into the wall plug so that the head is sticking out approximately 1/8" beyond the plug face. Reset the mantel into position, setting the screw head into the keyhole, and carefully allow the mantel to slid down into position.

You may have to adjust the screw head in the wall plug to insure the mantel has a snug fit against the wall.

The shelf can now be slid into position, by carefully aligning it with the wooden side cleats, and gently pushing it backwards.



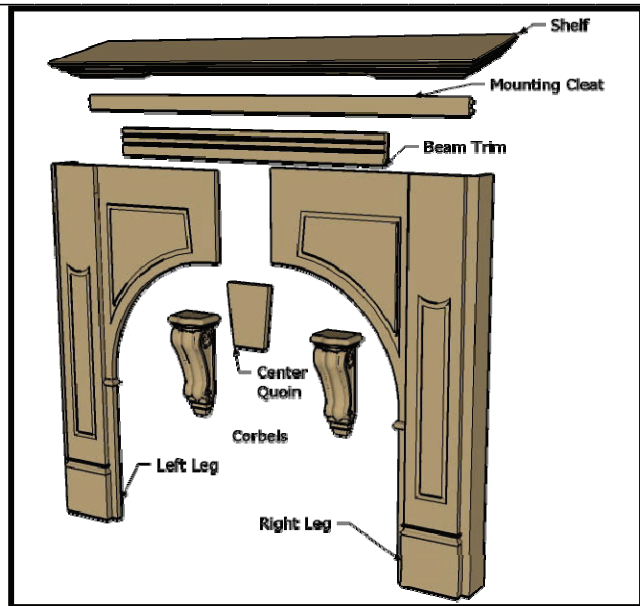
**Step #11**



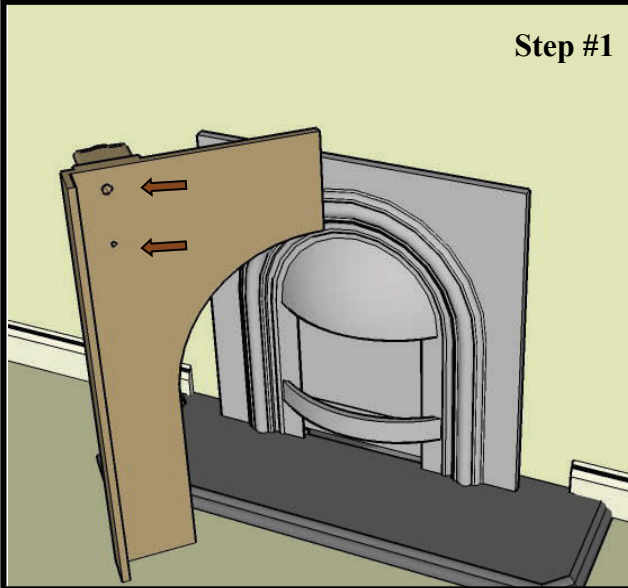
**Step #12**

**Selby Rebate**

- 1 pc shelf
- 1 pc mounting cleat
- 1 pc beam trim
- 1 pc left leg
- 1 pc right leg
- 1 pc center quoin
- 2 pcs corbels



Step #1

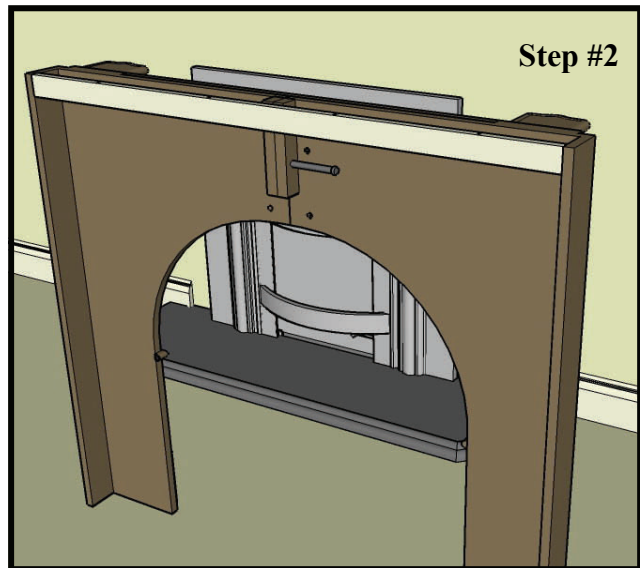


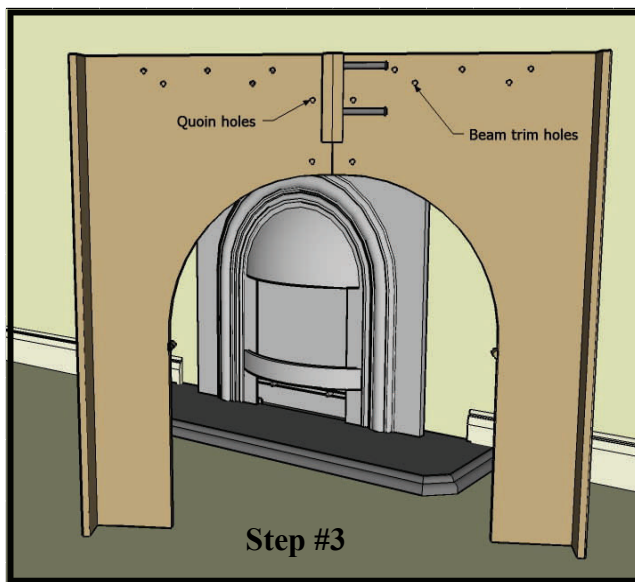
See pages 6 & 7 for the installation of the firebox

Install the corbels on the legs by inserting the bolt, washer and lock nut into the upper hole in the back of the mantel leg. Also install the screw in the lower hole which locks the corbel into position.

Insert the mounting cleat between the two legs. The two halves of the mantel can be connected together by inserting the bolts, washers, lock washers and nuts into the two wood cleats in the center of the back of the mantel.

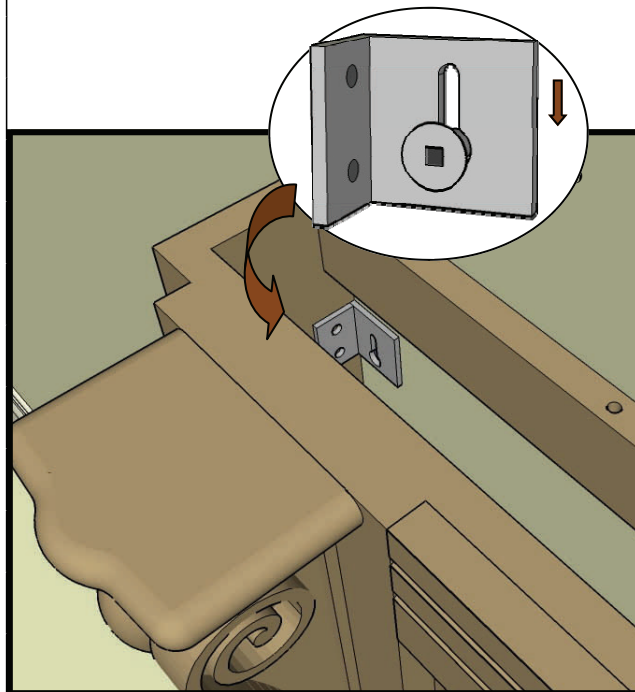
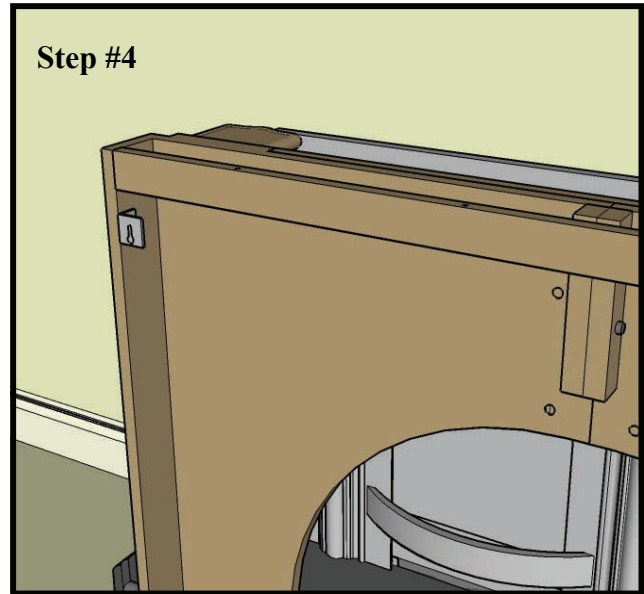
Step #2





The beam trim pc. can now be installed flush with the top edge of the mantel, by inserting the 10 screws from behind. Insure that these do not protrude through the front of the trim pc. The center quoin can now be centrally positioned, and secured from behind with the 4 screws provided. Make sure that the screws are the correct length and do not protrude through the face of the quoin.

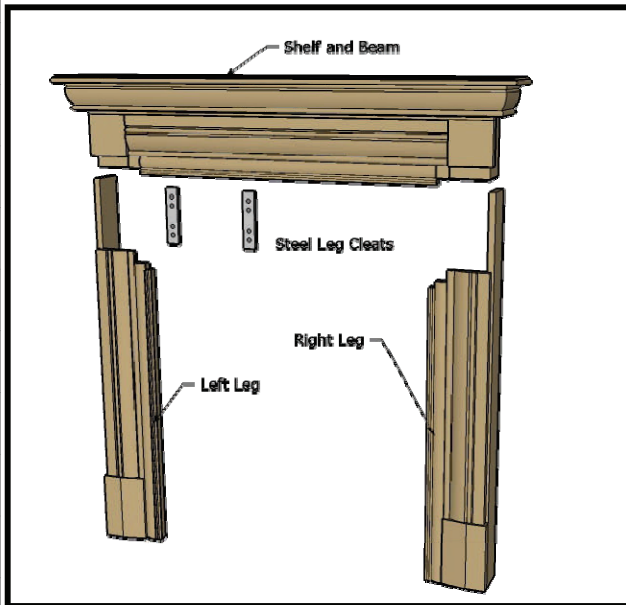
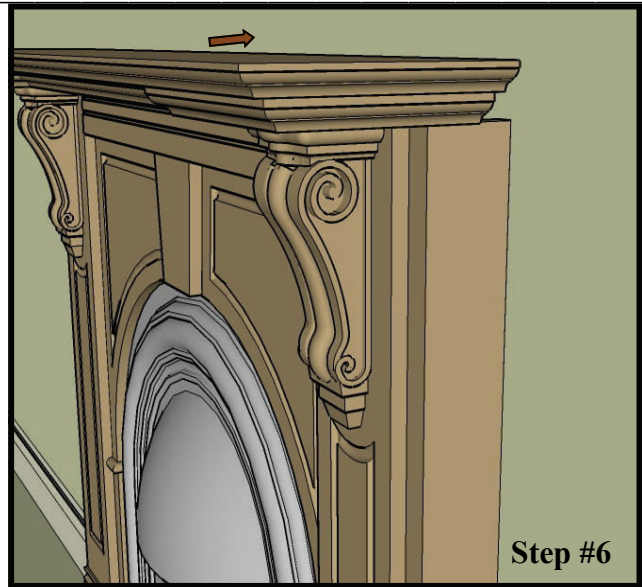
Screw the two key holed 'L' brackets to each side of the inside return of the leg, near the top. Make sure that the keyhole is located 'upside down'.



Place the mantel into final position on the wall, and mark the center of the top of the keyhole circle in the keyhole on each leg. Remove the mantel, and install the drywall plug centered on the mark you have just made. Set the screw into the wall plug so that the head is sticking out approximately 1/8" beyond the plug face. Reset the mantel into position, setting the screw head into the keyhole, and carefully allow the mantel to slid down into position.

You may have to adjust the screw head in the wall plug to insure the mantel has a snug fit against the wall.

The shelf can now be slid into position, by carefully aligning it with the wooden side cleats, and gently pushing it backwards.



**Kingston Rebate**

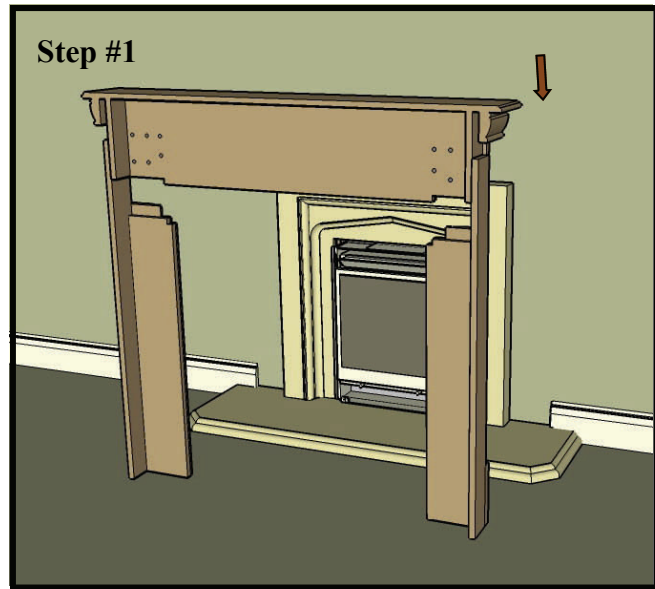
- 1 pc shelf and beam
- 2 pcs steel leg cleats
- 1 pc left leg
- 1 pc right leg

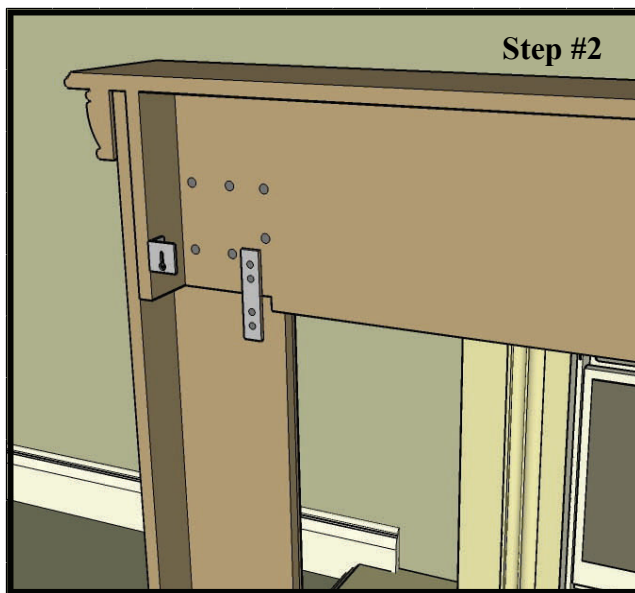
See pages 6 & 7 for the installation of the firebox

Carefully slide the shelf and beam down onto the left and right legs. Check the alignment of these pieces from the front of the mantel, and insure that the legs are 90 degrees to the beam.

Install the screws from behind that hold the legs and the beams together, insuring that they do not protrude through the front of the mantel.

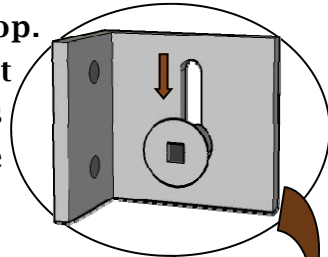
Do not attempt to move the mantel until the steel leg cleats are installed [following step].





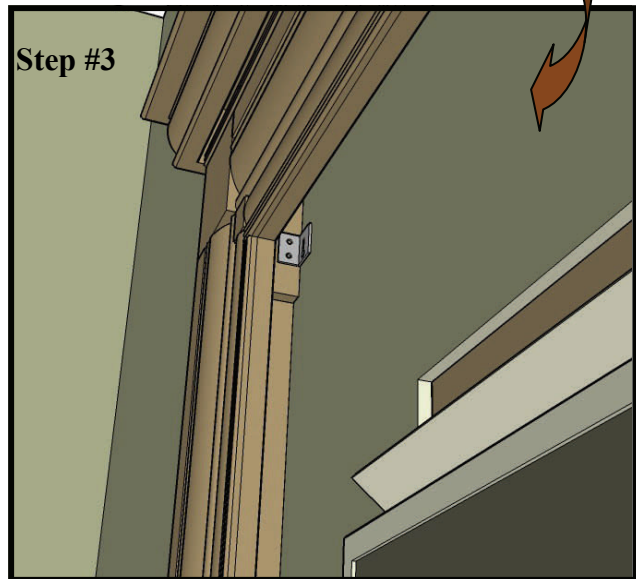
Locate the two steel leg cleats over the joint between the leg and the beam, and secure these using the appropriate screws. Insure these do not protrude through the front of the leg.

Screw the two key holed 'L' brackets to each side of the inside return of the leg, near the top. Make sure that the keyhole is located 'upside down'.



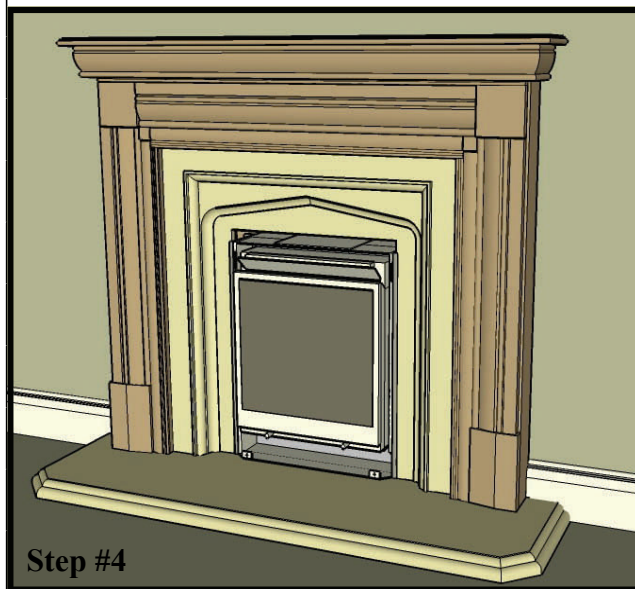
With the Tudor Vine front removed from the 530 firebox, put the assembled mantel into it's final position against the wall. While holding it carefully, make a mark on the wall at the top center point of the key hole in the wall mounting cleat.

Remove the mantel, and install the dry-wall plug centered on the mark you have just made. Screw in the screw provided with the wall plug so that the head is sticking out approximately 1/8" beyond the plug face.



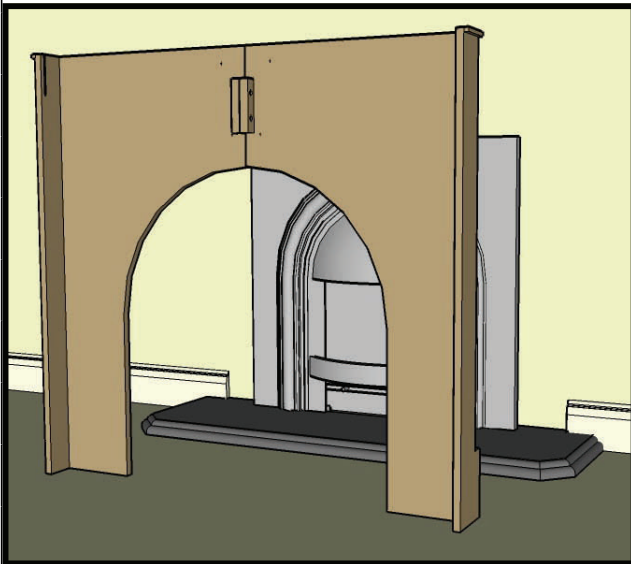
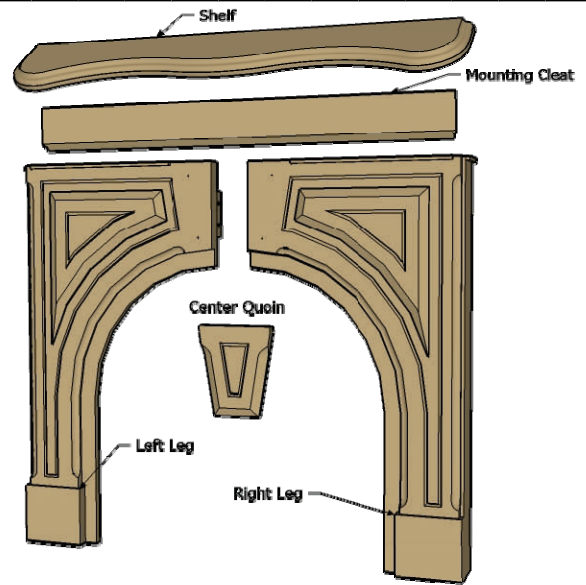
Carefully install the Tudor Vine as shown in on page 8. Reset the mantel into position by sliding the keyhole opening over the screw projecting from the wall plug, and then setting the mantel down into final position. You may have to adjust the screw head in the wall plug to insure the mantel has a snug fit against the wall.

Carefully install the President front, insuring that the top corners of the cast front do not scratch the top detail of the Tudor Vine front.



**Niagara Rebate**

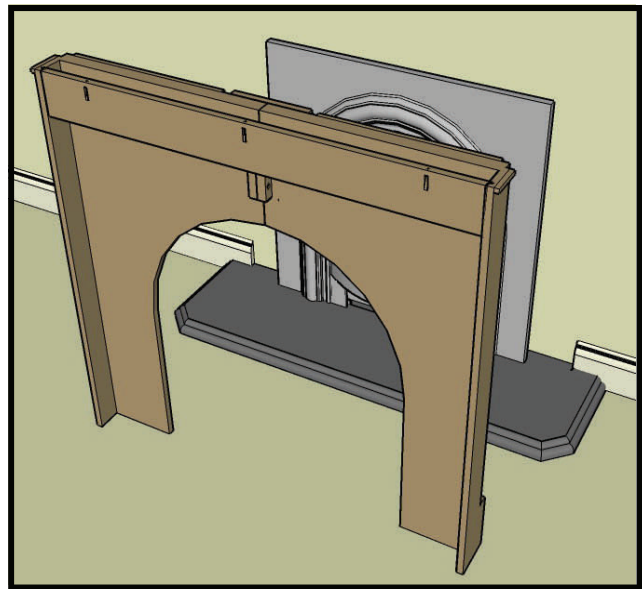
- 1 pc shelf
- 1 pc mounting cleat
- 1 pc left leg
- 1 pc right leg
- 1 pc center quoin

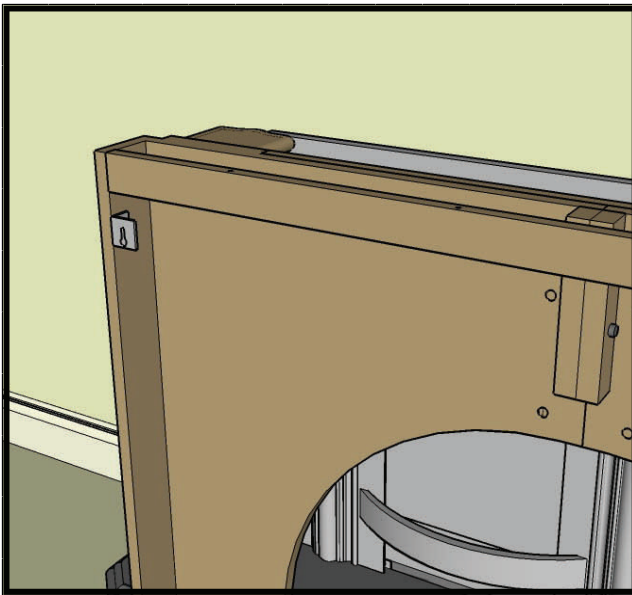


See pages 6 & 7 for the installation of the firebox

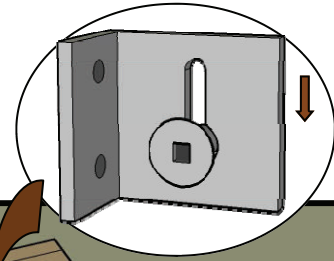
Insert the mounting cleat between the two legs. The two halves of the mantel can be connected together by inserting the bolts, washers, lock washers and nuts into the two wood cleats in the center of the back of the mantel.

The center quoin can now be centrally positioned, and secured from behind with the 4 screws provided. Make sure that the screws are the correct length and do not protrude through the face of the quoin.





Screw the two key holed 'L' brackets to each side of the inside return of the leg, near the top. Make sure that the keyhole is located 'upside down'.

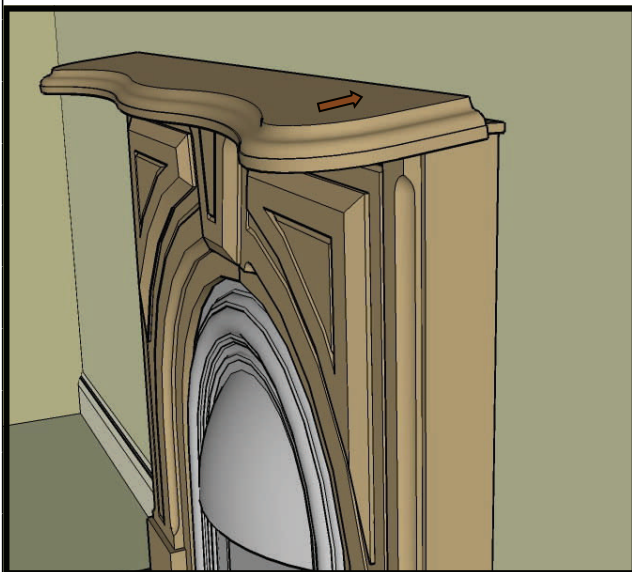


Place the mantel into final position on the wall, and mark the center of the top of the keyhole circle in the keyhole on each leg. Remove the mantel, and install the drywall plug centered on the mark you have just made. Set the screw into the wall plug so that the head is sticking out approximately 1/8" beyond the plug face. Reset the mantel into position, setting the screw head into the keyhole, and carefully allow the mantel to slid down into position.



You may have to adjust the screw head in the wall plug to insure the mantel has a snug fit against the wall.

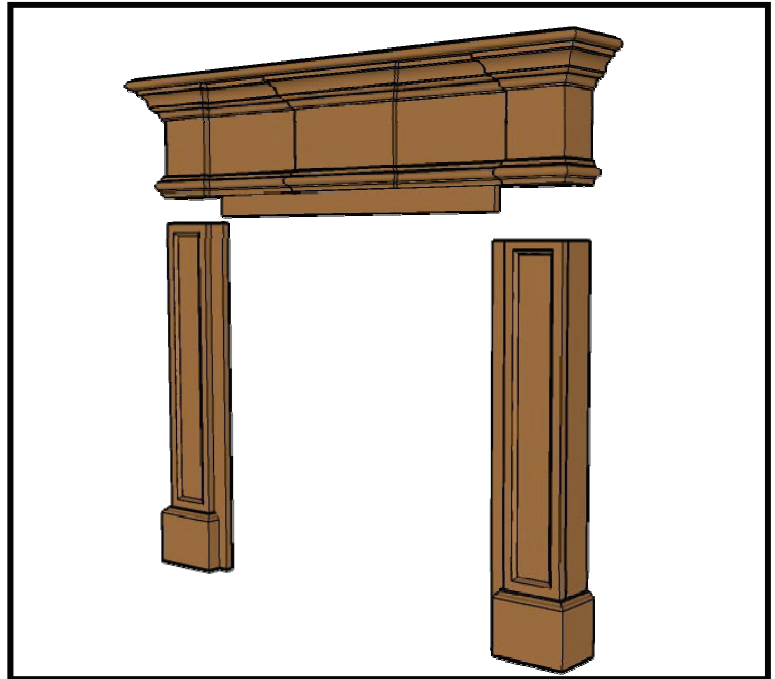
The shelf can now be slid into position, by carefully aligning it with the wooden side cleats, and gently pushing it backwards.



**Barrington Rebate**

- 1 pc left leg
- 1 pc right leg
- 1 pc beam & shelf

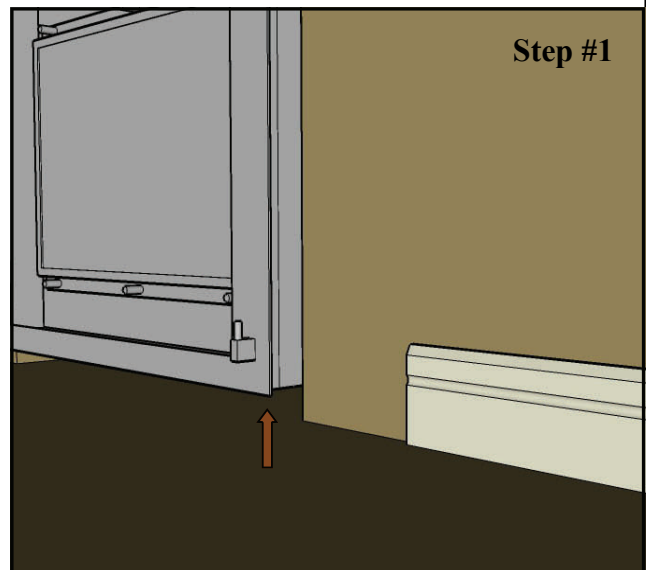
Note- there are three trim pcs included with the mantel, that are designed to go around the interior opening of the mantel. However, these are completely optional.



It is prudent to assemble some of the pcs as a dry run before you begin to install the system, to insure that you understand how all parts fit together. This is also an excellent time to check the relationship of these pcs to the firebox itself, to insure that it is installed at the correct height, and is in the correct position relative to the wall.

Carefully lay out the boxes in an area of the room where they will be out of the way, and open them up. Remove any loose packing, and with care, pull the pieces out and lay them down on the floor where they can individually be accessed.

NOTE- The fireplace must be installed off the floor to account for the height of the hearth. The total height that the unit must sit at is equal to the height of the hearth that is being installed. This is measured from the finished floor to the base of the fireplace. If the measurement is greater the unit will sit higher than the hearth, resulting in a gap between the fireplace and the hearth.

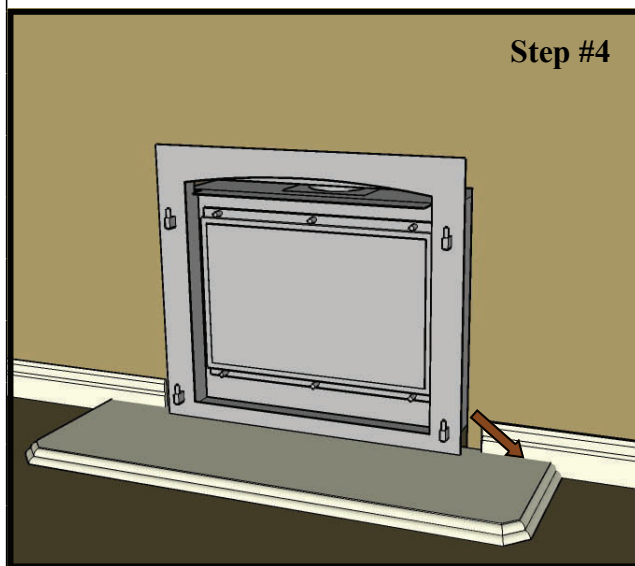
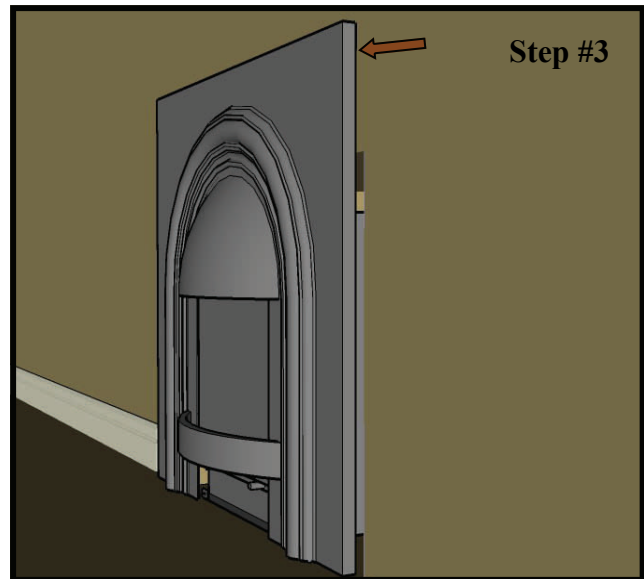






**NOTE-** The fireplace must not be installed flush with the wall, as there will not be enough adjustment in the front to bring it flush with the back of the surround. If the Barrington is being installed with the 534 fireplace [cannot be installed with the 535!] and Fenderfire front, then the fireplace should be installed so that the front flat section of the Fenderfire face is 2 1/4" in front of the drywall to accommodate the depth of the mantel. If this measurement is maintained the Fenderfire front will snug against the slips.

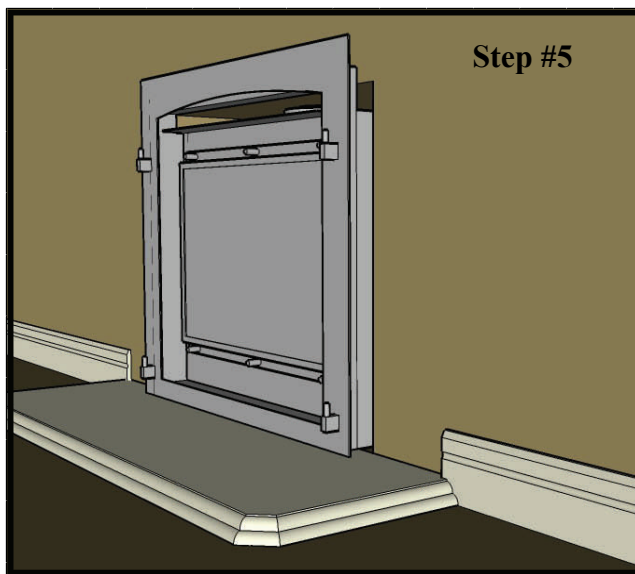
As the opening of the Barrington is the same as the Riversdale and the Kingston, this mantel can be installed with the rest of our backpanels, hearths and slips. In this case however, you must bring the front face of the slips 3" ahead of the dry-wall face. The example here shows the flat outer section of the Windsor face 3" ahead of the drywall.



At all times store, carry and move the hearth on edge. Do not carry hearth flat to avoid cracking in the middle. The hearth must be set directly on the floor. If there is a carpet, mark the perimeter of the hearth on the carpet and cut the carpet accordingly.

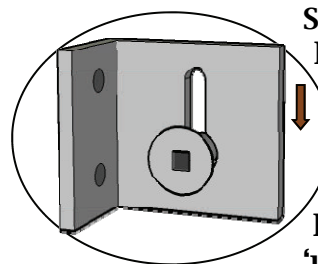
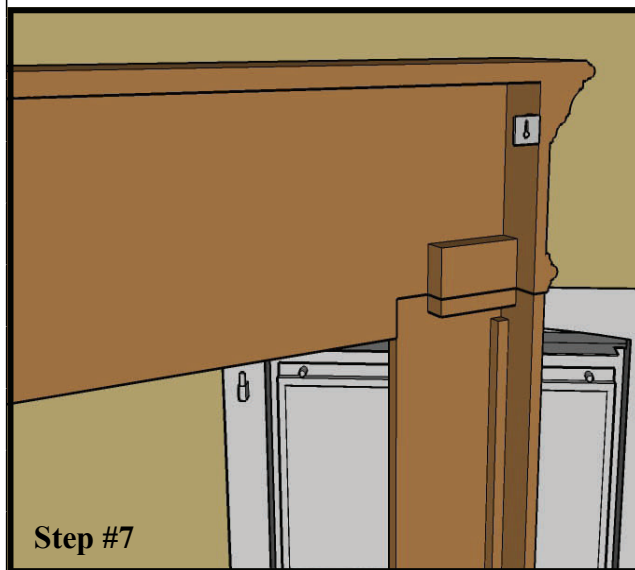
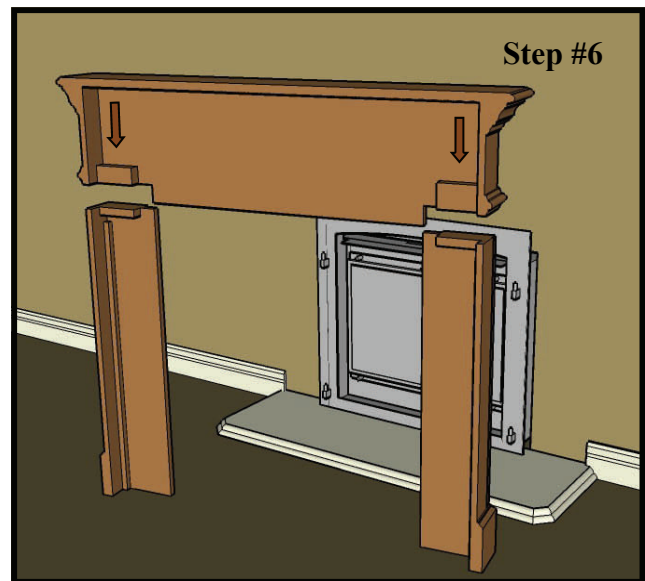
If there is a baseboard, carefully set the hearth into position and mark the base board where it must be cut. Make sure that the hearth is centered to the centre mark on the wall.

INSTALL INSTRUCTIONS FOR REBATE WOOD MANTELS



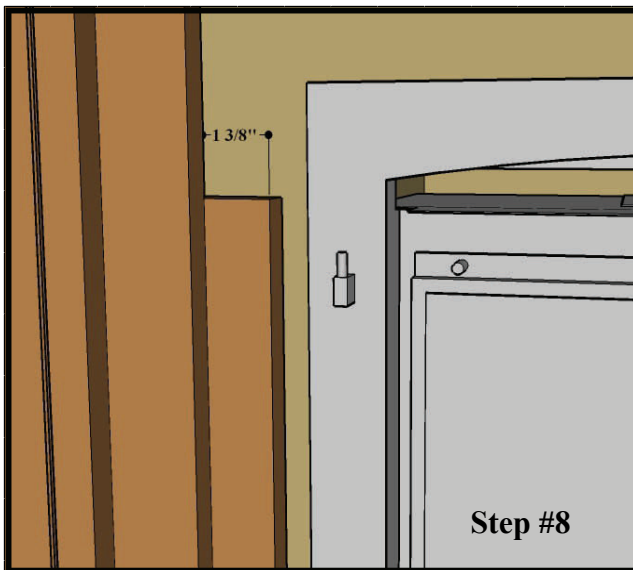
Use a fast set adhesive such as Kerakwik M to secure the hearth to the floor. Spread the adhesive across the bottom of the hearth where it comes in contact with the floor. Pick up the hearth on edge and lay the back edge against the wall. Slowly lower the leading edge and work the hearth back and forth to insure good adhesion. Wipe off excess adhesive with a damp cloth.

Stand the two legs on the floor, and lower the beam and shelf carefully into position on top of the legs. Use the bolts, washers and nuts to firmly attach the legs to the beam.



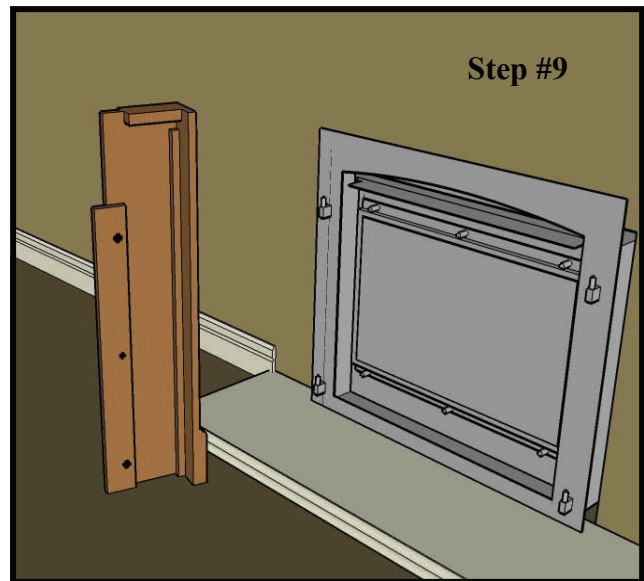
Screw the two key holed 'L' brackets to each side of the inside return of the leg, near the top. Make sure that the keyhole is located 'upside down'.

Once you have the brackets installed, you will need to dry fit the mantel onto the wall around the firebox. Measure how far down the from the shelf the top of the key hole slot is located, and how far in from the outer edge of the mantel.

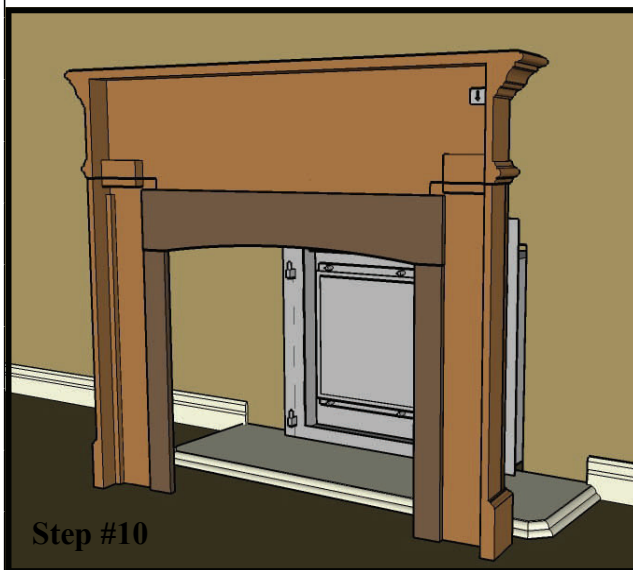


If you are installing the Barrington with the Fenderfire front, then you will need to install the wood slips onto the back of the opening of the mantel. Position a side slip so that there is 1 3/8" exposed on the front.

After checking that the 'reveal' of the slip is consistent from top to bottom, secure it with three screws into the back of the mantel leg. Make sure that the screws used are short enough to prevent their poking through the front of the mantel leg.



Once the two side slips are properly positioned and secured, you can now install the top slip.



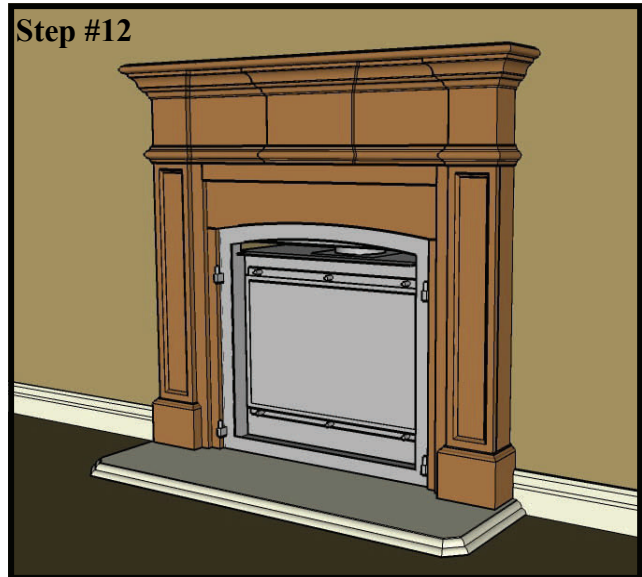
**Step #11**



Make a couple of fine marks on the wall where top and the side of the shelf rest . Remove the mantel, and calculate where the top slot of the keyhole would rest. Install the drywall plug centered on the mark you have just made. Set the screw into the wall plug so that the head is sticking out approximately 1/8" beyond the plug face. Reset the mantel into position, setting the screw head into the keyhole, and carefully allow the mantel to slide down into position.

Check the fit and positioning of the mantel.

**Step #12**



## *Care and Maintenance of Your Suite.*

The mantels may need to be polished with a good furniture polish from time to time.

The castings are painted then polished to give the highlighted effect. Water splashed on the casting will cause rust and should be wiped off immediately. If rust does appear, wiping the affected area with a cloth sprayed with WD40 is sufficient to remove the rust. In stubborn situations, the cast area may have to be lightly buffed or rubbed with a very fine grit emery cloth.

Distributed by



137 Nelson St

Brantford Ont N3S 4B5

1 800 325 7988