

Over 100 Years of Smart Comfort

Through years of innovation, including decades of commercial water heating experience, Rinnai has enhanced the way businesses operate, while creating a healthier way of life for their customers. Headquartered in Japan, with a network of 20 subsidiaries and 86 sales offices in 13 countries, Rinnai is the first major tankless brand manufactured in the United States. Unparalleled commitment has made us the number one selling brand of tankless water heater systems. Dedicated to a smarter kind of comfort, our value-added products continue to stay ahead of the demands of a changing world.



Water Heating Solutions



Home Heating Solutions



Commercial Water Heating Solutions

Creating a healthier way of living®

Learn more about Rinnai high-performance Tankless Water Heaters, Hybrid Water Heating Systems, Boilers, Vent-Free Fan Convectors, EnergySaver® Direct Vent Wall Furnaces and Hydronic Air Handlers.

rinnai.us | rinnai.ca

Rinnai Demand Duo® R-Series Product Overview

Standard Efficiency Hybrid Commercial Water Heating



Rinnai America Corporation
103 International Drive | Peachtree City, GA 30269
1-800-621-9419 | rinnai.us | rinnai.ca

PROUD SPONSOR



NEW

Features that Simplify Installation and Boost Performance

Demand Duo® R-SERIES

Replace your next standard efficiency atmospheric tank with the Demand Duo® R-Series. Install a higher performing product that has more than 2X the warranty and installs quickly and easily.

1. FAST Vent Connect to 6" Category 1 B-Vent



Pre-installed Intake Filter and Exhaust Connector so you can connect vent pipe directly to unit



Connects to 6" Single or Double Wall B-Vent



3-Piece 6" B-Vent Accessory Kit Included for install flexibility: 1 qty. 24" Straight galvanized vent, 2 qty. Multi-adjustable elbows

2. FAST Power Connect



Preinstalled J-Box with Duplex Outlet gives you the option to bring building power to the unit

3. FAST Water Connect

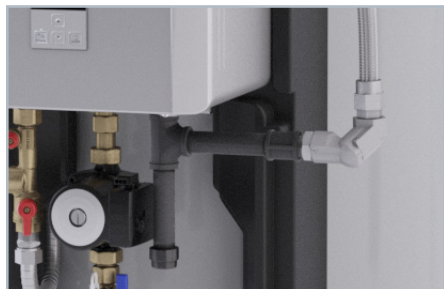


Cold Water Inlet Connection available at either the TOP...



...or the BOTTOM of the tank

4. FAST Gas Connect



36" Swivel Flex Gas Line with pre-installed Drip Leg reduces install time and labor costs



Gas Swivel Flex Line rotates 360°



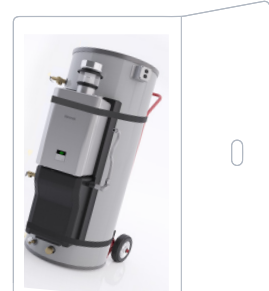
36" long with 180° radius



Demand Duo R-Series is a better performing and cost-effective alternative to standard efficiency tanks that easily installs in apartments, hotels, restaurants and more!



Ships in reinforced carton



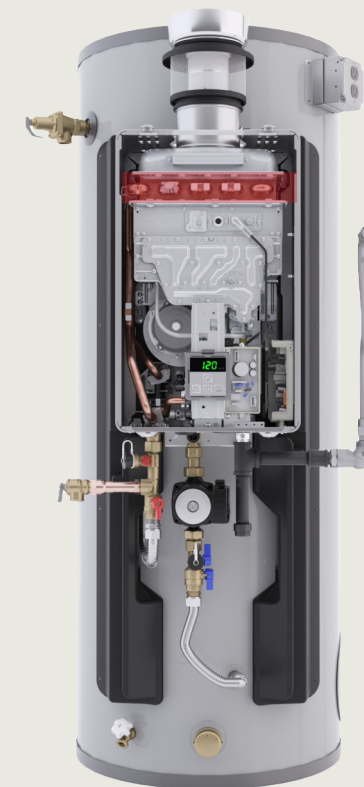
100- to 200 lbs lighter than most tanks, easy to transport

Easily fits through 32-in doorway

Delivering unsurpassed performance

No Thermal Stress

Water is heated in the Tankless Heat Exchanger, not the tank, for longer service life.



More Than **2X** THE WARRANTY of Most Traditional Tanks

- Unsurpassed **6 Years** on the Tank*
- 8 Years** on the Heat Exchanger
- 5 Years** on Parts
- 2 Years** on the Labor

* Versus 3 Year Warranty offered by most tank manufacturers

Same size tank, more hot water



STANDARD EFFICIENCY TANK
85-90% CAPACITY

R-SERIES HYBRID
100% CAPACITY



Rinnai America
Griffin, GA, USA

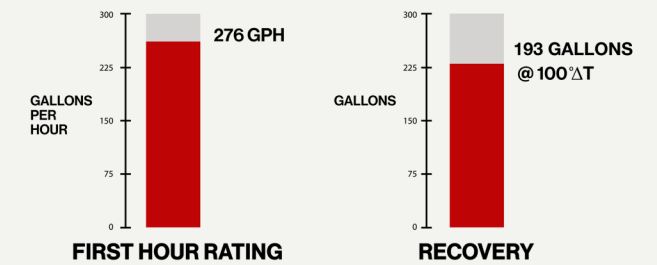
Rinnai continues to make significant investments in expanding its domestic assembly, operations and product portfolio.



R-Series available with 119- or 80-gallon tank capacity.



Unmatched performance all day long



Abundant hot water, meet the most demanding draw requirements
* First Hour Rating is for 119 gallon tank

NEW

Enhanced Temperature Recovery—Additional tank temperature sensor ensures optimal recovery

NEW

Integrated Pump Control
Tankless Engine logic controls pump activation, no separate controller

R-SERIES BY THE NUMBERS

- \$250**
Estimated Installation Savings
- More Than 2X**
The Warranty
- 100-200 lbs Lighter**
100 to 200lbs lighter than standard Tank
- 100% CAPACITY**
Uses 100% of the Tank
- 3FT**
Swivel Flex Gas Line pre-installed with Drip Leg
- 276 GPH**
First Hour
- ZERO**
Thermal Stress

DEMAND DUO® R-SERIES SPECIFICATIONS | NON-CONDENSING MODELS

	Demand Duo® 100 GAL	Demand Duo® 80 GAL
Model	CHS199100REC	CHS19980REC
Part Number	CHS199100RECIN / CHS199100RECIP	CHS19980RECIN / CHS19980RECIP
Dimensions - w x h x d Inches (mm)	31.5 x 71.4 x 40.2 (800 x 1814 x 1020)	27.7 x 65.3 x 35.6 (703 x 1657 x 904)
Product Weight (lbs/kg)	364 / 165	331 / 150
Installation Type	Indoor	Indoor
Storage Tank	119 / 450	80 / 303
Min/Max Input (1,000 Btu/h)	11.9 / 199	11.9 / 199
Thermal Efficiency (TE)*	80%	80%
Temperature Range	120°-180°F / 49°-82°C	120°-180°F / 49°-82°C
First Hour Delivery @ 100 °F ΔT* (gph/lph)	276 / 1045	249 / 942
Recovery @ 100 °F ΔT (gph/lph)	193 / 730	193 / 730